

CORRECTIVE SERVICES

AUSTRALIA

EMBARGO: 11.30AM (CANBERRA TIME) THURS 23 JUN 2005

C O N T E N T S

	<i>page</i>
Notes	2
Summary of findings	3

TABLES

1 Persons in full-time custody	7
2 Imprisonment rates	8
3 Persons in full-time custody, by sex	9
4 Imprisonment rates, by sex	10
5 Persons in full-time custody, by type of custody	11
6 Imprisonment rates, by type of custody	12
7 Persons in full-time custody, by legal status	13
8 Imprisonment rates, by legal status	14
9 Sentenced receptions into full-time custody	15
10 Indigenous persons in full-time custody, by sex	16
11 Indigenous imprisonment rates, by sex	17
12 Indigenous persons in full-time custody, by legal status	18
13 Indigenous imprisonment rates, by legal status	19
14 Persons in periodic detention, by sex	20
15 Periodic detention rates, by sex	21
16 Federal sentenced persons in full-time custody	22
17 Persons in community-based corrections, by sex	23
18 Community-based corrections rates, by sex	24
19 Persons in community-based corrections, by type of order	25

ADDITIONAL INFORMATION

Explanatory Notes	27
Glossary	33

I N Q U I R I E S

For further information about these and related statistics, contact the National Information and Referral Service on 1300 135 070 or Marika Woodberry on Melbourne (03) 9615 7601.

NOTES

FORTHCOMING ISSUES

ISSUE (Quarter)

RELEASE DATE

June 2005

22 September 2005



ABOUT THIS PUBLICATION

This publication presents information on persons in custody and community-based corrections. The statistics are derived from information provided to the Australian Bureau of Statistics (ABS) from administrative records held by corrective services agencies in each state and territory, and from the Australian Government Attorney-General's Department for details on federal prisoners. Details are provided for each state and territory on numbers and imprisonment rates by type of custody (i.e. open or secure custody or periodic detention). Information is also presented on prisoner numbers by legal status (sentenced or unsentenced) for all prisoners and for Indigenous prisoners, together with the number of sentenced receptions into custody and the number of federal prisoners.

The ABS acknowledges the valuable contribution of the Board of Management and the Advisory Group of the National Corrective Services Statistics Unit as well as the staff of the various agencies that provide the statistics that are presented in this publication.

CHANGES IN THIS ISSUE

Rates for Indigenous prisoners have been reintroduced following the release of experimental Indigenous population estimates and projections benchmarked on the 2001 Census of Population and Housing. These rates, previously calculated from estimates and projections based on the 1996 Census of Population and Housing, had been discontinued pending release of the new population data. In addition to presenting Indigenous imprisonment rates for the current quarter, this publication includes revised rates for the period 2002 to 2004. (See Explanatory Notes, paragraphs 26–29).

Ratios of Indigenous to non-Indigenous imprisonment rates are not produced from this data. Users who require this information are referred to *Prisoners in Australia 2004* (cat. no. 4517.0), where rates and ratios (including age standardised results) are presented in Table 3.

FURTHER INFORMATION

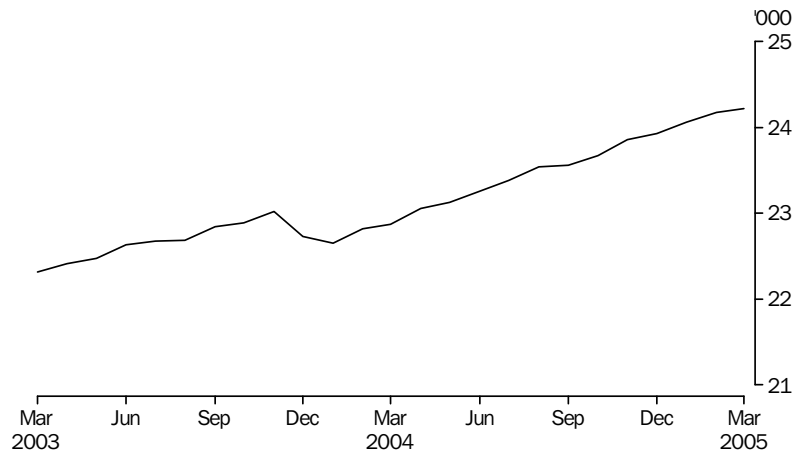
More information about ABS activities in the field of crime and justice statistics is available from the Crime and Justice theme page on the ABS web site. Details of other ABS publications relating to Crime and Justice statistics can be found in paragraphs 36–37 of the Explanatory Notes.

Dennis Trewin
Australian Statistician

SUMMARY OF FINDINGS

NUMBER OF PRISONERS

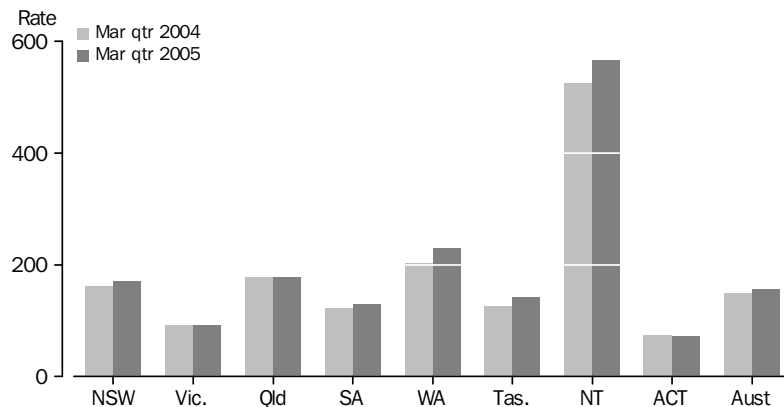
PERSONS IN PRISON CUSTODY, Average daily number per month



The average daily number of prisoners in Australia in the March quarter 2005 was 24,152, an increase of 336 (1%) on the December quarter 2004 and 1,371 (6%) on the March quarter 2004. These increases reflect the upward trend of the annual average daily prisoner numbers.

RATES PER 100,000 ADULTS

AVERAGE DAILY IMPRISONMENT RATE (a)



(a) Rate per 100,000 adult population.

Nationally, the average daily imprisonment rate was 156 prisoners per 100,000 adult population during the March quarter 2005, an increase of 4% since the March quarter 2004 (149 prisoners). The Northern Territory had the highest imprisonment rate (566 prisoners per 100,000 adult population), followed by Western Australia (230) and Queensland (177). The Australian Capital Territory (including Australian Capital Territory prisoners held in New South Wales prisons) and Victoria had the lowest imprisonment rates (72 and 91 prisoners per 100,000 adults respectively).

Of all states and territories, the largest proportional increase (14%) in imprisonment rates since the March quarter 2004 was recorded in Tasmania. The next highest increase was Western Australia (13%), followed by Northern Territory (8%). Victoria and the Australian Capital Territory recorded a decrease in imprisonment rates (2%) over the same period.

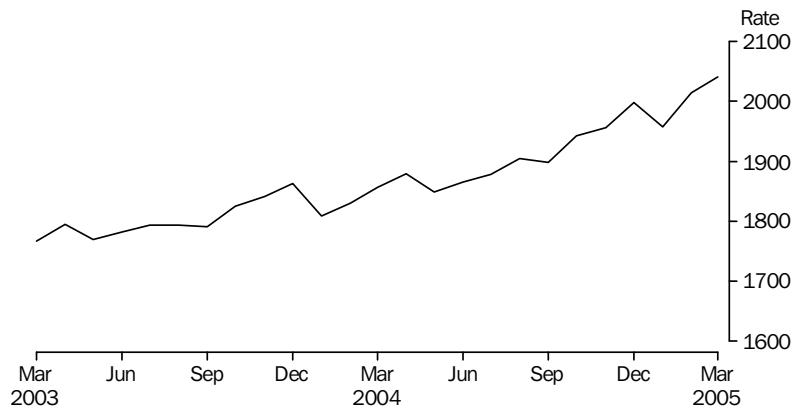
SUMMARY OF FINDINGS *continued*

SEX

Of the average daily number of full-time prisoners in Australia in the March quarter 2005, 22,491 (93%) were male and 1,660 (7%) were female. The average daily imprisonment rate for males was 295 prisoners per 100,000 adult male population. The average daily imprisonment rate for females was 21 prisoners per 100,000 adult female population. Males were 14 times more likely to be in prison than females.

INDIGENOUS PRISONERS

INDIGENOUS PERSONS IMPRISONMENT RATE (a)



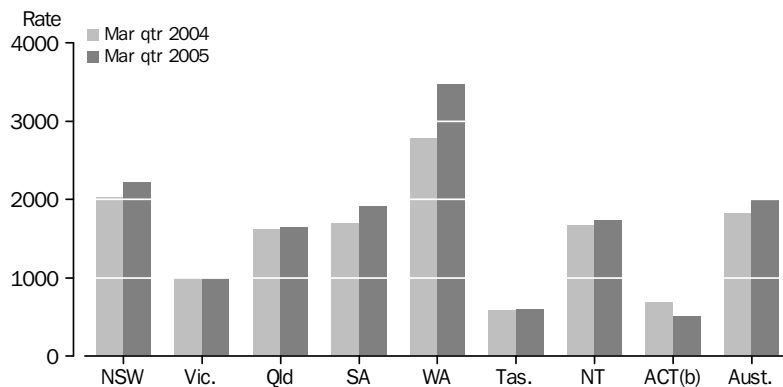
(a) Rate per 100,00 adult Indigenous population.

In the March quarter 2005 there were 5,606 Indigenous adult prisoners in Australia. Of these, 5,116 (91%) were men and 490 (9%) were women. Almost 80% of the total Indigenous prisoner population were in the three states New South Wales (1,762 persons), Western Australia (1,395) and Queensland (1,285).

The national rate of imprisonment for Indigenous people in the March quarter 2005 was 2,004 per 100,000 adult Indigenous population, an increase of 9% since the March quarter 2004 and an increase of 2% since the December quarter 2004.

The highest rate of imprisonment for Indigenous prisoners was recorded in Western Australia (3,471 Indigenous prisoners per 100,000 adult Indigenous population), followed by New South Wales (2,211).

INDIGENOUS IMPRISONMENT RATE (a)



(a) Rate per 100,000 adult Indigenous population, based on first day of month.

(b) Apparent variations in ACT rates may be as a result of small counts, see tables 10 and 11.

SUMMARY OF FINDINGS *continued*

INDIGENOUS PRISONERS *continued*

Of all states and territories, the largest proportional increase (24%) in the rate of imprisonment of Indigenous people since the March quarter 2004 was recorded in Western Australia. The next highest increase was in South Australia (13%), followed by New South Wales (9%).

Age standardised imprisonment rates in the 2004 National Prisoner Census take into account the different age profiles of the Indigenous and non-Indigenous populations. The national rate of imprisonment of Indigenous people at June 2004 was 11 times higher than the rate for non-Indigenous people. For further information comparing rates of imprisonment among Indigenous and non-Indigenous people, refer to *Prisoners in Australia 2004* (cat. no. 4517.0).

TYPE OF FULL-TIME CUSTODY

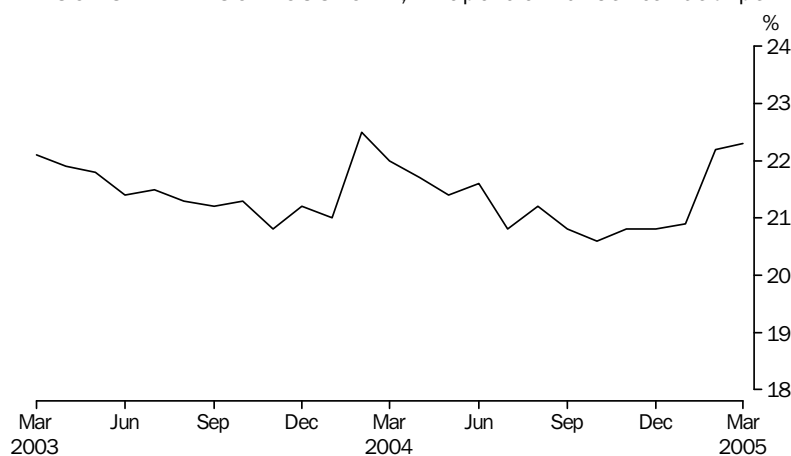
The average daily number of prisoners in secure prison custody in the March quarter 2005 was 17,291 (72% of prisoners in full-time custody). The remaining prisoners were held in open prison custody. Nationally, the proportions of prisoners held in secure and open prison custody have remained stable over the past three years.

In the March quarter 2005, all prisoners held in full-time custody in the Australian Capital Territory were in secure custody. In other states and territories, the highest proportions of prisoners held in secure full-time prison custody were recorded in Victoria (91%) and South Australia (89%). The proportion of prisoners in secure full-time custody was lowest in New South Wales (including Australian Capital Territory prisoners held in New South Wales prisons) at 53%.

LEGAL STATUS

The average of the number of prisoners in full-time custody on the first day of each of the three months in the March quarter 2005 was 24,078. Of these, the average number of unsentenced prisoners was 5,246 (22%). The Australian Capital Territory (including Australian Capital Territory prisoners held in New South Wales prisons) and South Australia had the highest proportions of unsentenced prisoners (38% and 34% respectively). The lowest proportion of unsentenced prisoners was recorded in Western Australia (16%).

PERSONS IN PRISON CUSTODY, Proportion unsentenced per month



SUMMARY OF FINDINGS *continued*

SENTENCED RECEPTIONS

There were 6,007 sentenced receptions into full-time custody in Australia in the March quarter 2005. The number of sentenced receptions decreased by 366 (6%) since the December quarter 2004, and increased by 354 (6%) since the March quarter 2004.

PERIODIC DETENTION

Periodic detention is a form of custody only used in New South Wales and the Australian Capital Territory. During the March quarter 2005 there was an average daily number of 798 persons in New South Wales and 98 persons in the Australian Capital Territory held in periodic detention. The rate of imprisonment for periodic detention increased in the Australian Capital Territory by 10% and in New South Wales by 9% between the March quarters 2004 and 2005. In the March quarter 2005, 59% of all persons in custody (full-time and periodic detention) in the Australian Capital Territory were in periodic detention. In contrast, 8% of all persons in custody in New South Wales were in periodic detention.

FEDERAL PRISONERS

In the March quarter 2005, there were 661 federal prisoners in Australia, a decrease of 6 (1%) since the March quarter 2004. Of the federal prisoners, more than half were sentenced in New South Wales.

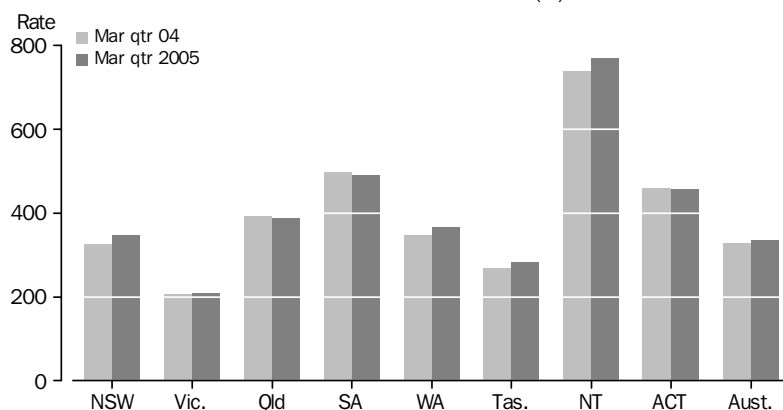
PERSONS IN COMMUNITY-BASED CORRECTIONS

In the March quarter 2005, there were 52,227 persons in community-based corrections in Australia, an increase of 4% (2,055 persons) since the March quarter 2004.

Rates per 100,000 adults

Nationally, the rate of persons in community-based corrections was 337 persons per 100,000 adult population for the March quarter 2005. This was an increase of 3% since the March quarter 2004 (329 persons per 100,000 adults). The largest increases were in New South Wales and Western Australia (each 6%), followed by Tasmania (5%). South Australia recorded the largest proportional decrease (2%).

COMMUNITY-BASED CORRECTIONS RATE (a)



(a) Rate per 100,000 adult population.

In the March quarter 2005, the male rate of participation in community-based corrections was 561 per 100,000 adult male population in comparison to 120 females per 100,000 adult female population. Males were five times more likely to be in community-based corrections than females.

PERSONS IN FULL-TIME CUSTODY

	NSW(a)	Vic.	Qld	SA	WA	Tas.	NT	ACT in ACT(b)	ACT in NSW(a)(c)	ACT Total(d)	Aust.(a)
AVERAGE DAILY NUMBER											
2002	7 705	3 550	5 030	1 469	2 803	423	675	58	133	190	21 713
2003	8 012	3 718	5 217	1 480	2 915	445	727	64	124	189	22 578
2004	8 522	3 595	5 283	1 473	3 161	484	727	68	118	186	23 312
2004											
Mar Qtr	8 344	3 557	5 186	1 444	3 009	448	730	63	117	180	22 781
Jun Qtr	8 456	3 582	5 278	1 445	3 136	466	716	70	116	186	23 149
Sep Qtr	8 575	3 643	5 320	1 490	3 191	484	714	73	123	196	23 490
Dec Qtr	8 709	3 597	5 346	1 512	3 303	535	748	66	117	183	23 816
2005											
Mar Qtr	8 939	3 535	5 305	1 536	3 453	520	798	67	112	178	24 152
2004											
Jan	8 268	3 614	5 153	1 434	2 962	435	734	54	119	173	22 654
Feb	8 381	3 530	5 183	1 455	3 019	448	734	70	118	188	22 820
Mar	8 387	3 525	5 222	1 443	3 046	463	722	65	114	179	22 873
Apr	8 435	3 583	5 260	1 427	3 106	462	720	65	116	181	23 057
May	8 433	3 581	5 276	1 443	3 143	473	712	68	114	182	23 129
Jun	8 502	3 583	5 297	1 464	3 160	463	715	77	119	196	23 260
Jul	8 557	3 632	5 308	1 478	3 149	459	723	77	120	197	23 382
Aug	8 609	3 653	5 336	1 493	3 184	479	711	71	126	197	23 536
Sep	8 557	3 644	5 317	1 499	3 243	514	709	70	122	192	23 554
Oct	8 639	3 617	5 326	1 511	3 268	531	713	66	115	181	23 669
Nov	8 685	3 596	5 390	1 510	3 319	539	753	63	116	179	23 855
Dec	8 801	3 579	5 325	1 514	3 324	536	778	69	119	189	23 926
2005											
Jan	8 952	3 576	5 272	1 524	3 372	519	777	68	120	188	24 060
Feb	8 934	3 512	5 316	1 559	3 471	515	802	67	109	176	24 175
Mar	8 932	3 515	5 328	1 526	3 517	525	815	65	106	170	24 222

- (a) Data for NSW include ACT prisoners held in NSW prisons. The ACT in NSW figures are a subset of the NSW figures and are not separately counted in the Australian totals – see Explanatory Notes, paragraph 20.
- (b) Refers to unsentenced persons in ACT prison custody and may include some sentenced fine default only prisoners – see Explanatory Notes, paragraph 20.

- (c) Prior to December quarter 2004, these figures are a single count taken on a specific day of the month and are not an average of the daily prisoner population for that month.
- (d) ACT in ACT figures and ACT in NSW figures may not add to ACT total due to rounding.

IMPRISONMENT RATES

	NSW(a)	Vic.	Qld	SA	WA	Tas.	NT	ACT(b)	Aust.
RATE PER 100,000 ADULT POPULATION									
2002	150.9	94.1	179.8	126.2	195.1	119.7	484.2	78.7	145.5
2003	155.6	97.4	181.7	125.9	199.7	124.7	526.5	77.0	149.2
2004	164.2	93.1	179.2	124.4	212.6	133.3	520.0	75.5	151.9
2004									
Mar Qtr	161.5	92.5	177.6	122.3	203.9	124.4	524.1	73.2	149.3
Jun Qtr	163.2	92.9	179.5	122.1	211.3	128.8	513.1	75.8	151.1
Sep Qtr	164.9	94.1	179.7	125.7	214.1	133.0	510.5	79.2	152.7
Dec Qtr	167.3	92.7	179.7	127.3	220.8	146.8	532.0	74.0	154.4
2005									
Mar Qtr	171.5	90.7	177.4	129.1	229.6	142.3	565.5	72.0	156.0
2004									
Jan	159.9	94.0	176.5	121.5	200.7	120.6	527.4	70.4	148.5
Feb	162.2	91.8	177.5	123.2	204.6	124.2	526.9	76.6	149.5
Mar	162.4	91.7	178.9	122.2	206.4	128.5	518.3	73.0	149.9
Apr	162.7	92.9	178.9	120.6	209.3	127.6	516.0	73.6	150.5
May	162.7	92.8	179.4	121.9	211.7	130.6	510.8	74.1	150.9
Jun	164.0	92.9	180.1	123.7	212.9	128.0	512.5	79.7	151.8
Jul	164.6	93.8	179.3	124.7	211.2	126.2	516.5	79.8	152.0
Aug	165.5	94.4	180.3	125.9	213.6	131.7	508.0	79.9	153.0
Sep	164.6	94.1	179.6	126.5	217.6	141.3	506.9	77.8	153.1
Oct	166.0	93.2	179.0	127.3	218.4	145.7	507.1	73.2	153.4
Nov	166.9	92.6	181.2	127.2	221.8	147.8	535.6	72.3	154.6
Dec	169.1	92.2	179.0	127.5	222.2	147.0	553.5	76.3	155.1
2005									
Jan	171.6	91.8	176.3	128.1	224.3	142.0	550.9	75.9	155.4
Feb	171.4	90.1	177.7	131.0	230.8	141.0	568.3	71.2	156.2
Mar	171.5	90.2	178.1	128.3	233.9	143.7	577.6	68.8	156.5

(a) Data for NSW exclude ACT prisoners held in NSW prisons.

(b) Data for ACT include ACT prisoners held in ACT as well as ACT prisoners held in NSW – see Explanatory Notes, paragraph 22.

PERSONS IN FULL-TIME CUSTODY, By sex

	NSW(a)	Vic.	Qld	SA	WA	Tas.	NT	ACT in ACT(b)	ACT in NSW(a)(c)	ACT Total(d)	Aust.(a)
MALES IN CUSTODY (AVERAGE DAILY NUMBER)											
2002	7 207	3 293	4 701	1 381	2 603	392	655	55	124	179	20 286
2003	7 497	3 449	4 874	1 386	2 695	416	706	61	118	180	21 084
2004	7 951	3 346	4 934	1 384	2 905	453	708	64	113	176	21 746
2004											
Mar Qtr	7 779	3 320	4 864	1 356	2 779	419	713	57	112	169	21 286
Jun Qtr	7 881	3 335	4 923	1 359	2 875	435	696	65	110	175	21 568
Sep Qtr	8 007	3 388	4 963	1 395	2 926	455	698	68	116	185	21 901
Dec Qtr	8 131	3 341	4 986	1 427	3 039	501	727	np	np	177	22 217
2005											
Mar Qtr	8 306	3 278	4 952	1 446	3 182	492	772	64	106	170	22 491
Jan	8 333	3 313	4 918	1 437	3 107	492	755	np	np	179	22 421
Feb	8 298	3 258	4 962	1 469	3 192	486	775	np	np	169	22 504
Mar	8 287	3 263	4 978	1 434	3 246	497	786	61	101	162	22 551
FEMALES IN CUSTODY (AVERAGE DAILY NUMBER)											
2002	497	257	329	88	200	32	19	3	8	12	1 426
2003	515	269	343	94	220	29	21	3	6	9	1 495
2004	572	249	349	88	255	31	18	4	5	10	1 566
2004											
Mar Qtr	566	238	322	88	229	30	17	6	5	10	1 495
Jun Qtr	576	247	355	86	261	31	20	5	6	11	1 581
Sep Qtr	567	255	357	95	265	28	16	5	6	11	1 589
Dec Qtr	577	256	360	85	265	34	20	np	np	6	1 599
2005											
Mar Qtr	633	257	353	90	271	28	26	3	6	8	1 660
Jan	619	263	354	87	265	27	22	np	np	9	1 640
Feb	636	254	354	90	279	30	27	np	np	8	1 671
Mar	644	253	350	92	271	28	29	4	5	9	1 671
PERSONS IN CUSTODY (AVERAGE DAILY NUMBER)											
2002	7 705	3 550	5 030	1 469	2 803	423	675	58	133	190	21 713
2003	8 012	3 718	5 217	1 480	2 915	445	727	64	124	189	22 578
2004	8 522	3 595	5 283	1 473	3 161	484	727	68	118	186	23 312
2004											
Mar Qtr	8 344	3 557	5 186	1 444	3 009	448	730	63	117	180	22 781
Jun Qtr	8 456	3 582	5 278	1 445	3 136	466	716	70	116	186	23 149
Sep Qtr	8 575	3 643	5 320	1 490	3 191	484	714	73	123	196	23 490
Dec Qtr	8 709	3 597	5 346	1 512	3 303	535	748	66	117	183	23 816
2005											
Mar Qtr	8 939	3 535	5 305	1 536	3 453	520	798	67	112	178	24 152
Jan	8 952	3 576	5 272	1 524	3 372	519	777	68	120	188	24 060
Feb	8 934	3 512	5 316	1 559	3 471	515	802	67	109	176	24 175
Mar	8 932	3 515	5 328	1 526	3 517	525	815	65	106	170	24 222

np not available for publication but included in totals where applicable, unless otherwise indicated

- (a) Data for NSW include ACT prisoners held in NSW prisons. The ACT in NSW figures are a subset of the NSW figures and are not separately counted in the Australian totals – see Explanatory Notes, paragraph 20.
- (b) Refers to unsentenced persons in ACT prison custody and may include some sentenced fine default only prisoners – see Explanatory Notes, paragraph 20.
- (c) Prior to the December quarter 2004, the figures are a single count taken on a specific day of the month and are not an average of the daily prisoner population for that month.
- (d) ACT in ACT figures and ACT in NSW figures may not add to ACT total due to rounding.

IMPRISONMENT RATES, By sex

	NSW(a)	Vic.	Qld	SA	WA	Tas.	NT	ACT(b)	Aust.
MALES IN CUSTODY (RATE PER 100,000 ADULT POPULATION)									
2002	287.3	179.2	341.2	242.5	364.4	227.9	893.8	150.9	276.8
2003	296.2	185.3	344.7	241.0	372.0	239.7	970.6	150.3	283.7
2004	311.4	177.6	338.4	238.6	393.5	256.5	957.5	146.3	288.0
2004									
Mar Qtr	306.0	177.2	337.1	234.5	379.4	238.6	967.8	140.9	283.7
Jun Qtr	309.1	177.4	338.8	234.4	390.3	247.2	943.1	145.6	286.3
Sep Qtr	312.9	179.3	338.8	240.2	395.1	257.0	941.5	152.6	289.3
Dec Qtr	317.3	176.4	338.6	245.1	408.7	282.3	977.3	145.8	292.6
2005									
Mar Qtr	323.7	172.3	334.5	247.8	425.8	276.3	1 033.3	139.8	295.1
Jan	324.4	174.2	332.2	246.3	415.9	276.4	1 011.1	147.2	294.2
Feb	323.4	171.3	335.1	251.8	427.3	272.8	1 037.1	138.8	295.3
Mar	323.1	171.5	336.2	245.8	434.5	279.2	1 051.9	133.2	295.9
FEMALES IN CUSTODY (RATE PER 100,000 ADULT POPULATION)									
2002	19.2	13.3	23.2	14.8	27.7	17.4	29.5	9.5	18.8
2003	19.8	13.7	23.6	15.6	29.9	15.9	32.7	7.0	19.4
2004	21.8	12.6	23.4	14.6	34.1	16.5	28.0	7.7	20.1
2004									
Mar Qtr	21.7	12.1	21.8	14.5	30.9	16.1	26.2	8.2	19.3
Jun Qtr	21.9	12.5	23.8	14.2	35.0	16.5	30.0	8.9	20.3
Sep Qtr	21.5	12.9	23.9	15.7	35.4	15.1	25.1	8.7	20.3
Dec Qtr	22.0	12.9	24.0	14.0	35.2	18.2	30.6	4.9	20.4
2005									
Mar Qtr	24.0	12.9	23.4	14.8	35.9	15.0	39.4	6.7	21.1
Jan	23.4	13.2	23.5	14.3	35.1	14.3	33.4	7.2	20.9
Feb	24.1	12.8	23.4	14.8	36.8	15.7	41.0	6.0	21.3
Mar	24.5	12.7	23.2	15.2	35.8	15.0	44.1	6.9	21.3
PERSONS IN CUSTODY (RATE PER 100,000 ADULT POPULATION)									
2002	150.9	94.1	179.8	126.2	195.1	119.7	484.2	78.7	145.5
2003	155.6	97.4	181.7	125.9	199.7	124.7	526.5	77.0	149.2
2004	164.2	93.1	179.2	124.4	212.6	133.3	520.0	75.5	151.9
2004									
Mar Qtr	161.5	92.5	177.6	122.3	203.9	124.4	524.1	73.2	149.3
Jun Qtr	163.2	92.9	179.5	122.1	211.3	128.8	513.1	75.8	151.1
Sep Qtr	164.9	94.1	179.7	125.7	214.1	133.0	510.5	79.2	152.7
Dec Qtr	167.3	92.7	179.7	127.3	220.8	146.8	532.0	74.0	154.4
2005									
Mar Qtr	171.5	90.7	177.4	129.1	229.6	142.3	565.5	72.0	156.0
Jan	171.6	91.8	176.3	128.1	224.3	142.0	550.9	75.9	155.4
Feb	171.4	90.1	177.7	131.0	230.8	141.0	568.3	71.2	156.2
Mar	171.5	90.2	178.1	128.3	233.9	143.7	577.6	68.8	156.5

(a) Data for NSW exclude ACT prisoners held in NSW prisons.

(b) Data for ACT include ACT prisoners held in ACT as well as ACT prisoners held in NSW – see Explanatory Notes, paragraph 22.

PERSONS IN FULL-TIME CUSTODY, By type of custody

	NSW(a)	Vic.	Qld	SA	WA	Tas.	NT	ACT in ACT(b)	ACT in NSW(a)(c)	ACT Total(d)	Aust. (a)
PERSONS IN SECURE CUSTODY (AVERAGE DAILY NUMBER)											
2002	4 207	3 151	4 218	1 290	1 972	337	543	58	39	97	15 776
2003	4 357	3 317	4 316	1 304	2 031	350	586	64	29	93	16 325
2004	4 517	3 240	4 407	1 308	2 204	394	571	68	24	92	16 708
2004											
Mar Qtr	4 445	3 224	4 364	1 280	2 122	360	586	63	20	83	16 443
Jun Qtr	4 456	3 220	4 420	1 292	2 196	381	557	70	23	93	16 591
Sep Qtr	4 559	3 271	4 412	1 317	2 216	393	556	73	26	99	16 796
Dec Qtr	4 606	3 243	4 431	1 341	2 280	441	587	66	26	92	16 995
2005											
Mar Qtr	4 754	3 224	4 423	1 369	2 397	432	627	67	27	94	17 291
Jan	4 756	3 242	4 381	1 359	2 335	427	610	68	29	97	17 179
Feb	4 765	3 208	4 435	1 388	2 393	426	635	67	29	96	17 317
Mar	4 742	3 219	4 456	1 361	2 462	441	636	65	25	89	17 381
PERSONS IN OPEN CUSTODY (AVERAGE DAILY NUMBER)											
2002	3 498	400	812	178	831	86	132	..	94	94	5 937
2003	3 655	400	901	175	884	96	141	..	95	95	6 253
2004	4 005	356	876	165	957	89	155	..	94	94	6 604
2004											
Mar Qtr	3 900	333	822	164	887	89	144	..	97	97	6 338
Jun Qtr	4 001	362	857	153	941	85	158	..	94	94	6 557
Sep Qtr	4 016	372	908	173	976	90	158	..	96	96	6 693
Dec Qtr	4 102	354	915	171	1 023	94	161	..	91	91	6 821
2005											
Mar Qtr	4 185	311	882	167	1 056	88	171	..	84	84	6 860
Jan	4 196	334	891	165	1 037	91	167	..	91	91	6 881
Feb	4 168	304	881	171	1 078	89	167	..	80	80	6 858
Mar	4 190	296	872	165	1 055	84	179	..	81	81	6 841
PERSONS IN CUSTODY (AVERAGE DAILY NUMBER)											
2002	7 705	3 550	5 030	1 469	2 803	423	675	58	133	190	21 713
2003	8 012	3 718	5 217	1 480	2 915	445	727	64	124	189	22 578
2004	8 522	3 595	5 283	1 473	3 161	484	727	68	118	186	23 312
2004											
Mar Qtr	8 344	3 557	5 186	1 444	3 009	448	730	63	117	180	22 781
Jun Qtr	8 456	3 582	5 278	1 445	3 136	466	716	70	116	186	23 149
Sep Qtr	8 575	3 643	5 320	1 490	3 191	484	714	73	123	196	23 490
Dec Qtr	8 709	3 597	5 346	1 512	3 303	535	748	66	117	183	23 816
2005											
Mar Qtr	8 939	3 535	5 305	1 536	3 453	520	798	67	112	178	24 152
Jan	8 952	3 576	5 272	1 524	3 372	519	777	68	120	188	24 060
Feb	8 934	3 512	5 316	1 559	3 471	515	802	67	109	176	24 175
Mar	8 932	3 515	5 328	1 526	3 517	525	815	65	106	170	24 222

.. not applicable

(a) Data for NSW include ACT prisoners held in NSW prisons. The ACT in NSW figures are a subset of the NSW figures and are not separately counted in the Australian totals – see Explanatory Notes, paragraph 20.

(b) Refers to unsentenced persons in ACT prison custody and may include some sentenced fine default only prisoners – see Explanatory Notes, paragraph 20.

(c) Prior to December quarter 2004, the figures are a single count taken on a specific day of the month and are not an average of the daily prisoner population for that month.

(d) ACT in ACT figures and ACT in NSW figures may not add to ACT total due to rounding.

IMPRISONMENT RATES, By type of custody

	NSW(a)	Vic.	Qld	SA	WA	Tas.	NT	ACT(b)	Aust.
PERSONS IN SECURE CUSTODY (RATE PER 100,000 ADULT POPULATION)									
2002	83.1	83.5	150.8	110.8	137.2	95.3	389.7	39.9	105.7
2003	85.4	86.9	150.3	111.0	139.1	97.9	424.5	38.1	107.9
2004	87.8	83.9	149.5	110.4	148.2	108.6	408.7	37.2	108.9
2004									
Mar Qtr	86.8	83.9	149.5	108.4	143.8	99.8	420.6	33.7	107.8
Jun Qtr	86.7	83.5	150.3	109.1	147.9	105.2	399.5	37.7	108.3
Sep Qtr	88.4	84.5	149.1	111.1	148.6	108.1	397.5	40.2	109.2
Dec Qtr	89.2	83.5	148.9	112.9	152.4	121.1	417.5	37.2	110.2
2005									
Mar Qtr	91.8	82.7	147.9	115.0	159.4	118.1	444.1	37.9	111.7
Jan	91.8	83.2	146.5	114.2	155.3	117.0	432.6	39.0	111.0
Feb	92.0	82.3	148.3	116.7	159.2	116.6	449.8	38.9	111.9
Mar	91.6	82.6	149.0	114.4	163.7	120.7	450.5	36.0	112.3
PERSONS IN OPEN CUSTODY (RATE PER 100,000 ADULT POPULATION)									
2002	67.8	10.6	29.0	15.3	57.8	24.4	94.4	38.8	39.8
2003	70.2	10.5	31.4	14.9	60.6	26.8	102.0	38.9	41.3
2004	76.4	9.2	29.7	13.9	64.4	24.7	111.2	38.4	43.0
2004									
Mar Qtr	74.6	8.7	28.2	13.9	60.1	24.6	103.5	39.5	41.5
Jun Qtr	76.4	9.4	29.2	12.9	63.4	23.5	113.6	38.1	42.8
Sep Qtr	76.5	9.6	30.7	14.6	65.5	24.9	113.0	39.0	43.5
Dec Qtr	78.1	9.1	30.8	14.4	68.4	25.7	114.5	36.8	44.2
2005									
Mar Qtr	79.7	8.0	29.5	14.0	70.2	24.1	121.4	34.0	44.3
Jan	79.7	8.6	29.8	13.9	69.0	25.0	118.3	36.9	44.4
Feb	79.4	7.8	29.5	14.4	71.7	24.4	118.4	32.3	44.3
Mar	79.8	7.6	29.2	13.9	70.2	23.0	127.0	32.8	44.2
PERSONS IN CUSTODY (RATE PER 100,000 ADULT POPULATION)									
2002	150.9	94.1	179.8	126.2	195.1	119.7	484.2	78.7	145.5
2003	155.6	97.4	181.7	125.9	199.7	124.7	526.5	77.0	149.2
2004	164.2	93.1	179.2	124.4	212.6	133.3	520.0	75.5	151.9
2004									
Mar Qtr	161.5	92.5	177.6	122.3	203.9	124.4	524.1	73.2	149.3
Jun Qtr	163.2	92.9	179.5	122.1	211.3	128.8	513.1	75.8	151.1
Sep Qtr	164.9	94.1	179.7	125.7	214.1	133.0	510.5	79.2	152.7
Dec Qtr	167.3	92.7	179.7	127.3	220.8	146.8	532.0	74.0	154.4
2005									
Mar Qtr	171.5	90.7	177.4	129.1	229.6	142.3	565.5	72.0	156.0
Jan	171.6	91.8	176.3	128.1	224.3	142.0	550.9	75.9	155.4
Feb	171.4	90.1	177.7	131.0	230.8	141.0	568.3	71.2	156.2
Mar	171.5	90.2	178.1	128.3	233.9	143.7	577.6	68.8	156.5

(a) Data for NSW exclude ACT prisoners held in NSW prisons.

(b) Data for ACT include ACT prisoners held in ACT as well as ACT prisoners held in NSW – see Explanatory Notes, paragraph 22.

PERSONS IN FULL-TIME CUSTODY, By legal status

	NSW(a)	Vic.	Qld	SA	WA	Tas. (b)	NT	ACT in ACT(c)	ACT in NSW(a)	ACT Total(d)	Aust. (a) (b)
UNSENTENCED (NUMBER ON FIRST DAY OF MONTH)											
2002 (e)	1 666	621	1 006	492	471	77	110	np	np	55	4 495
2003 (e)	1 847	699	1 099	491	446	81	126	np	np	57	4 847
2004 (e)	1 920	661	1 099	479	498	96	136	np	np	63	4 950
2004											
Mar Qtr(e)	1 969	709	1 072	474	466	79	145	np	np	54	4 968
Jun Qtr(e)	1 938	656	1 115	459	530	91	141	np	np	63	4 992
Sep Qtr(e)	1 866	626	1 134	499	496	87	129	np	np	72	4 908
Dec Qtr(e)	1 906	651	1 076	483	498	125	128	np	np	63	4 931
2005											
Mar Qtr(e)	2 093	649	1 082	524	555	115	161	np	np	67	5 246
Jan	2 046	652	1 025	469	506	89	141	np	np	67	4 995
Feb	2 139	658	1 094	551	564	120	165	66	—	66	5 357
Mar	2 094	638	1 126	551	596	137	176	np	np	67	5 385
SENTENCED (NUMBER ON FIRST DAY OF MONTH)											
2002 (e)	6 061	2 922	3 952	984	2 334	303	567	np	np	133	17 123
2003 (e)	6 166	3 024	4 120	995	2 460	340	604	np	np	124	17 710
2004 (e)	6 583	2 941	4 184	1 006	2 636	387	592	np	np	120	18 331
2004											
Mar Qtr(e)	6 362	2 875	4 115	978	2 491	367	588	np	np	118	17 776
Jun Qtr(e)	6 524	2 922	4 156	999	2 585	382	581	np	np	117	18 151
Sep Qtr(e)	6 695	3 014	4 185	1 000	2 680	384	588	np	np	124	18 548
Dec Qtr(e)	6 750	2 955	4 281	1 047	2 789	416	609	np	np	120	18 848
2005											
Mar Qtr(e)	6 817	2 885	4 214	1 028	2 854	407	626	np	np	112	18 832
Jan	6 841	2 944	4 240	1 046	2 808	431	620	np	np	113	18 932
Feb	6 826	2 864	4 212	1 020	2 846	396	622	—	110	110	18 786
Mar	6 785	2 846	4 189	1 017	2 908	395	637	np	np	112	18 778
TOTAL (NUMBER ON FIRST DAY OF MONTH)											
2002 (e)	7 727	3 543	4 958	1 475	2 805	380	676	55	132	188	21 618
2003 (e)	8 013	3 724	5 219	1 486	2 906	421	729	59	123	181	22 556
2004 (e)	8 502	3 602	5 284	1 485	3 134	483	728	64	119	182	23 281
2004											
Mar Qtr(e)	8 331	3 584	5 187	1 452	2 957	446	733	54	117	171	22 744
Jun Qtr(e)	8 462	3 578	5 271	1 458	3 114	473	722	64	116	180	23 143
Sep Qtr(e)	8 560	3 640	5 320	1 499	3 176	471	717	73	123	195	23 456
Dec Qtr(e)	8 656	3 606	5 357	1 530	3 287	541	738	63	119	183	23 779
2005											
Mar Qtr(e)	8 910	3 534	5 295	1 551	3 409	523	787	68	111	178	24 078
Jan	8 887	3 596	5 265	1 515	3 314	520	761	69	111	180	23 927
Feb	8 965	3 522	5 306	1 571	3 410	516	787	66	110	176	24 143
Mar	8 879	3 484	5 315	1 568	3 504	532	813	68	111	179	24 163

— nil or rounded to zero (including null cells)

np not available for publication but included in totals where applicable, unless otherwise indicated

(a) Data for NSW include ACT prisoners held in NSW prisons. The ACT in NSW figures are a subset of the NSW figures and are not separately counted in the Australian totals – see Explanatory Notes, paragraph 20.

(b) Tas. data prior to the September quarter 2003 are under enumerated – see Explanatory Notes, paragraph 13.

(c) Refers to unsentenced persons in ACT prison custody and may include some sentenced fine default only prisoners – see Explanatory Notes, paragraph 20.

(d) ACT in ACT figures and ACT in NSW figures may not add to ACT total due to rounding.

(e) Figures for the quarter and year for first day of month counts are calculated as a simple average – see Explanatory Notes, paragraph 5.

IMPRISONMENT RATES, By legal status

	NSW(a)	Vic.	Qld	SA	WA	Tas. (b)	NT	ACT(c)	Aust. (b)
UNSENTENCED (RATE PER 100,000 ADULT POPULATION)									
2002 (d)	33.2	16.5	36.0	42.2	32.8	21.7	78.6	22.8	30.1
2003 (d)	36.4	18.3	38.3	41.8	30.5	22.5	91.0	23.5	32.0
2004 (d)	37.5	17.1	37.3	40.4	33.5	26.3	97.2	25.5	32.3
2004									
Mar Qtr(d)	38.6	18.4	36.7	40.2	31.6	22.0	104.1	21.9	32.6
Jun Qtr(d)	37.9	17.0	37.9	38.8	35.7	25.0	101.1	25.6	32.6
Sep Qtr(d)	36.4	16.2	38.3	42.1	33.3	23.9	92.2	29.0	31.9
Dec Qtr(d)	37.1	16.8	36.2	40.7	33.3	34.3	91.3	25.3	32.0
2005									
Mar Qtr(d)	40.7	16.7	36.2	44.0	36.9	31.6	113.9	26.9	33.9
Jan	39.7	16.7	34.3	39.4	33.7	24.4	99.9	27.1	32.3
Feb	41.6	16.9	36.6	46.3	37.5	32.8	116.9	26.7	34.6
Mar	40.7	16.4	37.6	46.3	39.6	37.5	124.7	27.1	34.8
SENTENCED (RATE PER 100,000 ADULT POPULATION)									
2002 (d)	118.2	77.5	141.3	84.5	162.4	85.6	406.7	54.8	114.7
2003 (d)	119.2	79.2	143.5	84.6	168.5	95.3	436.9	50.6	117.0
2004 (d)	126.3	76.1	141.9	85.0	177.3	106.8	423.3	48.6	119.4
2004									
Mar Qtr(d)	122.6	74.8	141.0	82.8	168.8	101.7	422.2	47.9	116.5
Jun Qtr(d)	125.4	75.8	141.4	84.4	174.1	105.6	416.6	47.7	118.4
Sep Qtr(d)	128.2	77.9	141.4	84.4	179.8	105.6	420.6	50.1	120.6
Dec Qtr(d)	129.1	76.1	143.9	88.2	186.4	114.2	433.5	48.5	122.2
2005									
Mar Qtr(d)	130.3	74.0	140.9	86.4	189.8	111.5	443.9	45.1	121.6
Jan	130.7	75.6	141.8	87.9	186.8	118.0	439.4	45.6	122.3
Feb	130.5	73.5	140.8	85.7	189.3	108.4	440.8	44.4	121.3
Mar	129.7	73.0	140.1	85.5	193.4	108.1	451.4	45.2	121.3
TOTAL (RATE PER 100,000 ADULT POPULATION)									
2002 (d)	151.4	93.9	177.2	126.7	195.2	107.3	485.3	77.5	144.9
2003 (d)	155.6	97.5	181.7	126.4	199.0	117.9	527.9	74.1	149.0
2004 (d)	163.8	93.2	179.2	125.4	210.8	133.1	520.4	74.0	151.7
2004									
Mar Qtr(d)	161.2	93.2	177.7	123.0	200.4	123.7	526.3	69.8	149.0
Jun Qtr(d)	163.3	92.8	179.3	123.2	209.8	130.6	517.7	73.4	151.0
Sep Qtr(d)	164.6	94.0	179.7	126.5	213.1	129.5	512.8	79.1	152.5
Dec Qtr(d)	166.3	92.9	180.0	128.9	219.7	148.5	524.9	73.9	154.1
2005									
Mar Qtr(d)	171.0	90.7	177.1	130.4	226.8	143.1	557.7	72.0	155.5
Jan	170.5	92.3	176.0	127.3	220.4	142.3	539.3	72.7	154.5
Feb	172.0	90.4	177.4	132.0	226.8	141.2	557.7	71.1	155.9
Mar	170.3	89.4	177.7	131.8	233.1	145.6	576.2	72.3	156.1
(a)	Data for NSW exclude ACT prisoners held in NSW prisons.				(c)	Data for ACT include ACT prisoners held in ACT as well as ACT prisoners held in NSW – see Explanatory Notes, paragraph 22.			
(b)	Tas. data prior to the September quarter 2003 are under enumerated – see Explanatory Notes, paragraph 13.				(d)	Figures for the quarter and year for first day of month counts are calculated as a simple average – see Explanatory Notes, paragraph 5.			

SENTENCED RECEPTIONS INTO FULL-TIME CUSTODY

	NSW(a)	Vic.	Qld	SA	WA	Tas.(b)	NT	ACT in ACT	ACT in NSW(a)	ACT Total	Aust.(a)(b)
NUMBER											
2002	7 974	4 172	6 773	1 121	3 561	814	776	107	110	217	25 298
2003	6 979	4 039	6 300	1 259	3 658	540	1 037	71	98	169	23 883
2004	6 956	3 916	6 537	1 178	3 810	809	1 123	43	123	166	24 372
2004											
Mar Qtr	1 664	884	1 521	259	857	177	279	12	23	35	5 653
Jun Qtr	1 764	1 113	1 631	284	929	222	276	15	35	50	6 234
Sep Qtr	1 672	956	1 731	324	988	193	239	9	30	39	6 112
Dec Qtr	1 856	963	1 654	311	1 036	217	329	7	35	42	6 373
2005											
Mar Qtr	1 634	791	1 658	266	1 171	151	330	6	17	23	6 007
Jan	426	185	465	60	361	49	97	3	3	6	1 646
Feb	593	294	586	98	403	49	112	—	7	7	2 135
Mar	615	312	607	108	407	53	121	3	7	10	2 226

— nil or rounded to zero (including null cells)

(a) Data for NSW include ACT prisoners held in NSW prisons. The ACT in NSW figures are a subset of the NSW figures and are not separately counted in the Australian totals – see Explanatory Notes, paragraph 20.

(b) Tas. data prior to January 2004 are under enumerated – see Explanatory Notes, paragraph 13.

	NSW(b)	Vic.	Qld	SA	WA	Tas. (c)	NT	ACT in ACT(d)	ACT in NSW(b)	ACT Total(e)	Aust. (b) (c)
MALES (NUMBER ON FIRST DAY OF MONTH)											
2002 (f)	1 218	145	1 097	227	814	55	445	np	np	19	4 006
2003 (f)	1 324	159	1 123	230	927	np	555	8	np	np	4 380
2004 (f)	1 458	168	1 158	242	1 073	57	560	7	9	16	4 722
2004											
Mar Qtr(f)	1 416	163	1 160	242	992	51	576	6	11	16	4 605
Jun Qtr(f)	1 422	172	1 142	234	1 058	59	561	7	8	15	4 654
Sep Qtr(f)	1 475	175	1 126	240	1 099	57	548	8	8	16	4 728
Dec Qtr(f)	1 518	160	1 206	253	1 142	np	554	np	8	np	4 902
2005											
Mar Qtr(f)	1 576	161	1 191	280	1 247	57	599	7	5	12	5 116
Jan	1 567	161	1 162	277	1 183	55	583	9	4	13	4 997
Feb	1 589	164	1 191	289	1 256	57	595	5	6	11	5 146
Mar	1 573	157	1 219	273	1 301	58	618	7	6	13	5 206
FEMALES (NUMBER ON FIRST DAY OF MONTH)											
2002 (f)	140	16	87	21	74	5	12	np	np	3	356
2003 (f)	145	13	87	21	92	np	14	—	np	np	377
2004 (f)	169	14	89	16	121	7	10	—	—	—	427
2004											
Mar Qtr(f)	169	11	77	17	98	6	9	—	—	—	388
Jun Qtr(f)	170	14	92	12	121	7	11	—	—	—	428
Sep Qtr(f)	167	14	94	16	127	7	9	—	—	—	434
Dec Qtr(f)	168	16	94	18	139	np	12	np	—	np	456
2005											
Mar Qtr(f)	185	16	94	22	149	5	18	—	—	—	490
Jan	180	17	98	20	144	5	14	—	—	—	478
Feb	191	16	95	20	145	5	17	—	—	—	489
Mar	185	16	89	27	157	4	24	—	—	—	502
PERSONS (NUMBER ON FIRST DAY OF MONTH)											
2002 (f)	1 357	161	1 184	248	887	60	457	8	14	22	4 362
2003 (f)	1 469	172	1 210	251	1 019	58	569	9	12	20	4 757
2004 (f)	1 626	182	1 248	258	1 194	64	570	7	9	16	5 149
2004											
Mar Qtr(f)	1 585	174	1 237	260	1 090	58	584	6	11	16	4 993
Jun Qtr(f)	1 592	187	1 233	246	1 179	66	572	7	8	15	5 083
Sep Qtr(f)	1 642	189	1 220	256	1 226	64	557	8	8	16	5 162
Dec Qtr(f)	1 686	176	1 300	271	1 281	67	567	10	8	17	5 358
2005											
Mar Qtr(f)	1 762	177	1 285	302	1 395	61	617	7	5	12	5 606
Jan	1 747	178	1 260	297	1 327	60	597	9	4	13	5 475
Feb	1 780	180	1 286	309	1 401	62	612	5	6	11	5 635
Mar	1 758	173	1 308	300	1 458	62	642	7	6	13	5 708

— nil or rounded to zero (including null cells)

np not available for publication but included in totals where applicable, unless otherwise indicated

(a) Persons in custody are asked their Indigenous status during reception into custody – see Explanatory Notes, paragraphs 18–19.

(b) Data for NSW include ACT prisoners held in NSW prisons. The ACT in NSW figures are a subset of the NSW figures and are not separately counted in the Australian totals – see Explanatory Notes, paragraph 20.

(c) Tas. data prior to the September quarter 2003 are under enumerated – see Explanatory Notes, paragraph 13.

(d) Refers to unsentenced persons in ACT prison custody and may include some sentenced fine default only prisoners – see Explanatory Notes, paragraph 20.

(e) ACT in ACT figures and ACT in NSW figures may not add to ACT total due to rounding.

(f) Figures for the quarter and year for first day of the month counts are calculated as a simple average – see Explanatory Notes, paragraph 5.

INDIGENOUS IMPRISONMENT RATES, By sex(a)(b)

	NSW(c)	Vic.	Qld	SA	WA	Tas.	NT	ACT	Aust.
MALES (RATE PER 100,000 ADULT INDIGENOUS POPULATION)									
2002 (d)(e)	3 340.0	1 809.2	3 218.1	3 228.1	4 527.2	1 182.7	2 714.5	1 701.1	3 197.4
2003 (d)(e)	3 559.6	1 911.8	3 201.4	3 191.1	5 031.2	np	3 312.7	np	3 408.0
2004 (d)	3 841.8	1 960.8	3 211.0	3 270.6	5 681.0	1 174.4	3 280.2	1 353.5	3 586.0
2004									
Mar Qtr(d)	3 725.1	1 906.2	3 215.3	3 269.5	5 251.6	1 067.0	3 374.0	1 388.9	3 497.1
Jun Qtr(d)	3 749.0	2 015.4	3 164.5	3 152.5	5 602.9	1 226.4	3 288.0	1 247.2	3 534.3
Sep Qtr(d)	3 889.5	2 046.5	3 121.1	3 242.5	5 820.0	1 184.8	3 209.9	1 360.5	3 590.3
Dec Qtr(d)	4 003.5	1 875.0	3 342.9	3 417.9	6 049.5	np	3 248.9	np	3 722.2
2005									
Mar Qtr(d)	4 065.4	1 814.8	3 209.2	3 677.9	6 427.1	1 142.7	3 429.6	1 015.9	3 783.5
Jan	4 044.7	1 818.6	3 131.9	3 642.8	6 098.9	1 109.1	3 339.8	1 070.8	3 695.2
Feb	4 096.5	1 852.5	3 210.1	3 800.6	6 475.2	1 149.4	3 408.6	906.1	3 805.4
Mar	4 055.1	1 773.4	3 285.5	3 590.2	6 707.2	1 169.6	3 540.3	1 070.8	3 849.8
FEMALES (RATE PER 100,000 ADULT INDIGENOUS POPULATION)									
2002 (d)(e)	361.9	193.0	228.5	286.2	385.6	111.5	70.7	279.8	265.6
2003 (d)(e)	371.9	153.9	222.5	272.5	469.3	np	78.7	np	274.4
2004 (d)	423.3	156.3	223.3	200.9	600.9	143.0	57.7	—	302.7
2004									
Mar Qtr(d)	424.5	128.0	193.7	218.8	485.3	124.9	48.4	—	275.4
Jun Qtr(d)	427.0	161.9	229.6	155.7	600.9	144.7	63.2	—	304.0
Sep Qtr(d)	418.7	154.4	234.6	201.9	630.6	144.7	50.2	—	307.8
Dec Qtr(d)	422.9	180.8	235.4	227.2	686.7	np	68.8	np	323.6
2005									
Mar Qtr(d)	454.4	179.0	229.8	273.6	714.7	90.4	100.4	—	339.0
Jan	441.3	186.3	239.5	245.0	692.2	96.9	76.6	—	330.9
Feb	468.3	175.3	232.2	245.0	697.0	96.9	93.1	—	338.5
Mar	453.6	175.3	217.5	330.7	754.7	77.5	131.4	—	347.5
PERSONS (RATE PER 100,000 ADULT INDIGENOUS POPULATION)									
2002 (d)(e)	1 813.2	985.0	1 640.1	1 712.8	2 391.8	632.9	1 360.1	993.7	1 681.3
2003 (d)(e)	1 924.5	1 016.5	1 632.8	1 687.0	2 677.8	597.5	1 656.9	883.5	1 788.3
2004 (d)	2 086.4	1 042.9	1 641.4	1 684.6	3 055.8	645.2	1 629.5	677.2	1 888.9
2004									
Mar Qtr(d)	2 030.3	1 001.7	1 627.9	1 693.3	2 788.6	583.7	1 670.4	687.7	1 831.9
Jun Qtr(d)	2 043.2	1 072.6	1 622.6	1 604.2	3 018.1	671.4	1 636.1	617.5	1 864.6
Sep Qtr(d)	2 107.3	1 084.1	1 604.7	1 671.6	3 138.3	651.1	1 591.3	673.7	1 893.6
Dec Qtr(d)	2 164.9	1 013.2	1 710.3	1 769.4	3 278.2	674.8	1 619.9	729.8	1 965.5
2005									
Mar Qtr(d)	2 211.2	984.5	1 646.7	1 915.3	3 471.1	606.1	1 727.1	502.8	2 004.4
Jan	2 194.4	990.1	1 615.1	1 883.6	3 301.1	592.9	1 671.1	530.0	1 957.6
Feb	2 233.4	1 001.2	1 648.4	1 959.7	3 485.2	612.7	1 713.1	448.4	2 014.8
Mar	2 205.7	962.3	1 676.6	1 902.6	3 627.0	612.7	1 797.1	530.0	2 040.9

— nil or rounded to zero (including null cells)

np not available for publication but included in totals where applicable, unless otherwise indicated

(a) Persons in custody are asked their Indigenous status during reception into custody — see Explanatory Notes, paragraphs 18–19.

(b) The rates calculation uses the Indigenous population projection for 30 June of that calendar year as the denominator - see Explanatory Notes, paragraphs 26-29.

(c) Data for NSW exclude ACT prisoners held in NSW prisons.

(d) Figures for the quarter and year for first day of the month counts are calculated as a simple average — see Explanatory Notes, paragraph 5.

(e) The 2002 and 2003 rates have been revised - see Explanatory Notes, paragraph 29.

	NSW(b)	Vic.	Qld	SA	WA	Tas.(c)	NT	ACT in ACT(d)	ACT in NSW(b)	ACT Total(e)	Aust.(b)
UNSENTENCED (NUMBER ON FIRST DAY OF MONTH)											
2002 (f)	290	35	199	92	146	15	83	8	—	9	866
2003 (f)	333	40	214	89	165	11	100	9	—	9	961
2004 (f)	352	38	245	97	190	15	99	7	—	7	1 043
2004											
Mar Qtr(f)	362	41	248	96	184	14	112	6	—	6	1 062
Jun Qtr(f)	339	37	245	83	210	14	105	7	—	7	1 039
Sep Qtr(f)	341	39	241	102	190	14	95	np	np	7	1 029
Dec Qtr(f)	365	34	247	108	175	18	86	10	—	10	1 043
2005											
Mar Qtr(f)	395	38	240	125	223	15	112	7	—	7	1 155
Jan	383	35	228	116	202	9	94	9	—	9	1 076
Feb	411	41	242	131	233	20	115	5	—	5	1 198
Mar	390	39	249	129	234	16	128	7	—	7	1 192
SENTENCED (NUMBER ON FIRST DAY OF MONTH)											
2002 (f)	1 067	126	985	156	742	45	374	—	13	14	3 496
2003 (f)	1 136	132	996	162	854	46	468	—	12	12	3 796
2004 (f)	1 275	144	1 002	161	1 005	49	471	—	9	9	4 106
2004											
Mar Qtr(f)	1 223	133	989	164	906	44	472	—	11	11	3 932
Jun Qtr(f)	1 253	150	989	163	969	52	467	—	8	8	4 043
Sep Qtr(f)	1 301	150	979	154	1 036	50	462	np	np	9	4 133
Dec Qtr(f)	1 321	143	1 053	163	1 106	48	481	—	8	8	4 314
2005											
Mar Qtr(f)	1 367	139	1 045	177	1 172	46	505	—	5	5	4 451
Jan	1 364	143	1 032	181	1 125	51	503	—	4	4	4 399
Feb	1 369	139	1 044	178	1 168	42	497	—	6	6	4 437
Mar	1 368	134	1 059	171	1 224	46	514	—	6	6	4 516
TOTAL (NUMBER ON FIRST DAY OF MONTH)											
2002 (f)	1 357	161	1 184	248	887	60	457	8	14	22	4 362
2003 (f)	1 469	172	1 210	251	1 019	58	569	9	12	20	4 757
2004 (f)	1 626	182	1 248	258	1 194	64	570	7	9	16	5 149
2004											
Mar Qtr(f)	1 585	174	1 237	260	1 090	58	584	6	11	16	4 993
Jun Qtr(f)	1 592	187	1 233	246	1 179	66	572	7	8	15	5 083
Sep Qtr(f)	1 642	189	1 220	256	1 226	64	557	8	8	16	5 162
Dec Qtr(f)	1 686	176	1 300	271	1 281	67	567	10	8	17	5 358
2005											
Mar Qtr(f)	1 762	177	1 285	302	1 395	61	617	7	5	12	5 606
Jan	1 747	178	1 260	297	1 327	60	597	9	4	13	5 475
Feb	1 780	180	1 286	309	1 401	62	612	5	6	11	5 635
Mar	1 758	173	1 308	300	1 458	62	642	7	6	13	5 708

— nil or rounded to zero (including null cells)

np not available for publication but included in totals where applicable, unless otherwise indicated

(a) Persons in custody are asked their Indigenous status during reception into custody – see Explanatory Notes, paragraphs 18–19.

(b) Data for NSW include ACT prisoners held in NSW prisons. The ACT in NSW figures are a subset of the NSW figures and are not separately counted in the Australian totals – see Explanatory Notes, paragraph 20.

(c) Tas. data prior to the September quarter 2003 are under enumerated – see Explanatory Notes, paragraph 13.

(d) Refers to unsentenced persons in ACT prison custody and may include some sentenced fine default only prisoners – see Explanatory Notes, paragraph 20.

(e) ACT in ACT figures and ACT in NSW figures may not add to the ACT total due to rounding.

(f) Figures for the quarter and year for the first day of the month counts are calculated as a simple average – see Explanatory Notes, paragraph 5.

INDIGENOUS IMPRISONMENT RATES, By legal status(a)(b)

	NSW(c)	Vic.	Qld	SA	WA	Tas.	NT	ACT	Aust.
UNSENTENCED (RATE PER 100,000 ADULT INDIGENOUS POPULATION)									
2002 (d)(e)	390.8	212.6	275.4	633.9	392.9	153.2	246.2	383.9	333.9
2003 (d)(e)	439.6	234.2	288.5	596.5	434.3	118.1	292.5	370.9	361.2
2004 (d)	453.6	216.4	322.7	634.2	485.2	153.5	284.2	305.3	382.7
2004									
Mar Qtr(d)	466.5	235.6	326.3	623.8	470.0	141.7	320.2	238.6	389.5
Jun Qtr(d)	436.8	212.6	321.9	541.2	537.4	145.1	300.2	280.7	381.3
Sep Qtr(d)	439.9	224.1	317.1	665.1	486.2	141.7	270.6	294.7	377.4
Dec Qtr(d)	471.2	193.5	325.4	706.4	447.0	185.6	245.8	407.0	382.8
2005									
Mar Qtr(d)	496.9	213.2	307.2	794.9	554.7	148.2	314.4	285.4	413.1
Jan	482.2	194.7	292.3	735.7	502.5	88.9	263.1	366.9	384.7
Feb	517.4	228.1	310.2	830.8	579.6	197.6	321.9	203.8	428.3
Mar	491.0	216.9	319.2	818.1	582.1	158.1	358.3	285.4	426.2
SENTENCED (RATE PER 100,000 ADULT INDIGENOUS POPULATION)									
2002 (d)(e)	1 422.4	772.4	1 364.7	1 078.9	1 998.9	479.7	1 113.9	609.8	1 347.4
2003 (d)(e)	1 484.9	782.4	1 344.3	1 090.6	2 243.5	479.4	1 364.4	512.7	1 427.1
2004 (d)	1 632.8	826.5	1 318.7	1 050.4	2 570.6	491.7	1 345.3	371.9	1 506.2
2004									
Mar Qtr(d)	1 563.8	766.2	1 301.6	1 069.4	2 318.6	442.0	1 350.3	449.1	1 442.4
Jun Qtr(d)	1 606.3	860.0	1 300.7	1 062.9	2 480.6	526.3	1 336.0	336.8	1 483.3
Sep Qtr(d)	1 667.4	860.0	1 287.6	1 006.4	2 652.1	509.4	1 320.7	378.9	1 516.2
Dec Qtr(d)	1 693.6	819.8	1 384.9	1 062.9	2 831.2	489.2	1 374.1	322.8	1 582.8
2005									
Mar Qtr(d)	1 714.3	771.3	1 339.5	1 120.4	2 916.3	457.9	1 412.7	217.4	1 591.3
Jan	1 712.2	795.4	1 322.9	1 147.9	2 798.6	504.0	1 408.0	163.1	1 572.8
Feb	1 716.0	773.2	1 338.2	1 128.9	2 905.5	415.1	1 391.2	244.6	1 586.4
Mar	1 714.7	745.4	1 357.5	1 084.5	3 044.9	454.6	1 438.8	244.6	1 614.7
TOTAL (RATE PER 100,000 ADULT INDIGENOUS POPULATION)									
2002 (d)(e)	1 813.2	985.0	1 640.1	1 712.8	2 391.8	632.9	1 360.1	993.7	1 681.3
2003 (d)(e)	1 924.5	1 016.5	1 632.8	1 687.0	2 677.8	597.5	1 656.9	883.5	1 788.3
2004 (d)	2 086.4	1 042.9	1 641.4	1 684.6	3 055.8	645.2	1 629.5	677.2	1 888.9
2004									
Mar Qtr(d)	2 030.3	1 001.7	1 627.9	1 693.3	2 788.6	583.7	1 670.4	687.7	1 831.9
Jun Qtr(d)	2 043.2	1 072.6	1 622.6	1 604.2	3 018.1	671.4	1 636.1	617.5	1 864.6
Sep Qtr(d)	2 107.3	1 084.1	1 604.7	1 671.6	3 138.3	651.1	1 591.3	673.7	1 893.6
Dec Qtr(d)	2 164.9	1 013.2	1 710.3	1 769.4	3 278.2	674.8	1 619.9	729.8	1 965.5
2005									
Mar Qtr(d)	2 211.2	984.5	1 646.7	1 915.3	3 471.1	606.1	1 727.1	502.8	2 004.4
Jan	2 194.4	990.1	1 615.1	1 883.6	3 301.1	592.9	1 671.1	530.0	1 957.6
Feb	2 233.4	1 001.2	1 648.4	1 959.7	3 485.2	612.7	1 713.1	448.4	2 014.8
Mar	2 205.7	962.3	1 676.6	1 902.6	3 627.0	612.7	1 797.1	530.0	2 040.9

(a) Persons in custody are asked their Indigenous status during reception into custody — see Explanatory Notes paragraphs 18–19.

(b) The rates calculation uses the Indigenous population projection for 30 June of that calendar year as the denominator - see Explanatory Notes, paragraphs 26-29.

(c) Data for NSW exclude ACT prisoners held in NSW prisons.

(d) Figures for the quarter and year for first day of the month counts are calculated as a simple average — see Explanatory Notes, paragraph 5.

(e) The 2002 and 2003 rates have been revised - see Explanatory Notes, paragraph 29.

NSW ACT Aust.(a)

MALES (AVERAGE DAILY
NUMBER)

2002	831	66	897
2003	739	73	811
2004	687	89	775
2004			
Mar Qtr	np	np	763
Jun Qtr	679	83	762
Sep Qtr	696	92	788
Dec Qtr	695	93	788
2005			
Mar Qtr	716	93	810
Jan	716	93	809
Feb	702	94	796
Mar	730	93	823

FEMALES (AVERAGE DAILY
NUMBER)

2002	68	4	72
2003	60	4	64
2004	62	4	66
2004			
Mar Qtr	np	np	58
Jun Qtr	56	5	60
Sep Qtr	59	6	65
Dec Qtr	76	4	81
2005			
Mar Qtr	82	5	86
Jan	84	4	88
Feb	79	5	84
Mar	82	5	87

PERSONS (AVERAGE DAILY
NUMBER)

2002	899	70	969
2003	799	76	875
2004	749	93	842
2004			
Mar Qtr	733	89	822
Jun Qtr	734	88	822
Sep Qtr	755	98	853
Dec Qtr	771	98	869
2005			
Mar Qtr	798	98	896
Jan	800	97	897
Feb	781	99	880
Mar	812	98	910

np not available for publication but included
in totals where applicable, unless
otherwise indicated

(a) Periodic detention is a form of custody
only used in NSW and the ACT.

	NSW	ACT	Aust. (a)
.....			
MALES (RATE PER 100,000 ADULT POPULATION)			
2002	33.7	55.5	12.2
2003	29.7	60.7	10.9
2004	27.3	73.7	10.3
2004			
Mar Qtr	np	np	10.2
Jun Qtr	27.0	69.0	10.1
Sep Qtr	27.6	76.4	10.4
Dec Qtr	27.5	76.9	10.4
2005			
Mar Qtr	28.3	76.9	10.6
Jan	28.3	76.8	10.6
Feb	27.7	77.4	10.4
Mar	28.8	76.6	10.8
.....			
FEMALES (RATE PER 100,000 ADULT POPULATION)			
2002	2.7	3.6	1.0
2003	2.3	3.0	0.8
2004	2.4	3.3	0.8
2004			
Mar Qtr	np	np	0.8
Jun Qtr	2.1	3.6	0.8
Sep Qtr	2.3	4.7	0.8
Dec Qtr	2.9	3.5	1.0
2005			
Mar Qtr	3.1	3.7	1.1
Jan	3.2	3.3	1.1
Feb	3.0	4.0	1.1
Mar	3.1	4.0	1.1
.....			
PERSONS (RATE PER 100,000 ADULT POPULATION)			
2002	17.9	29.0	6.5
2003	15.8	31.1	5.8
2004	14.6	37.8	5.5
2004			
Mar Qtr	14.4	36.1	5.4
Jun Qtr	14.4	35.6	5.4
Sep Qtr	14.7	39.8	5.5
Dec Qtr	15.0	39.5	5.6
2005			
Mar Qtr	15.5	39.6	5.8
Jan	15.5	39.3	5.8
Feb	15.2	40.0	5.7
Mar	15.8	39.6	5.9

np not available for publication but included in totals where applicable, unless otherwise indicated

(a) Periodic detention is a form of custody only used in NSW and the ACT.

FEDERAL SENTENCED PERSONS IN FULL-TIME CUSTODY(a)

	NSW	Vic.	Qld	SA	WA	Tas.	NT	ACT	Aust.
.....									
NUMBER ON FIRST DAY OF MONTH									
2002 (b)	331	85	77	22	152	5	91	5	767
2003 (b)	335	82	87	22	123	7	34	4	693
2004 (b)	358	77	91	15	105	9	15	5	675
2004									
Mar Qtr(b)	347	84	85	14	109	8	17	4	667
Jun Qtr(b)	356	81	91	13	111	6	15	5	679
Sep Qtr(b)	360	71	97	15	103	12	15	6	679
Dec Qtr(b)	368	73	90	16	98	10	13	6	675
2005									
Mar Qtr(b)	365	77	87	20	87	7	13	4	661
Jan	373	80	96	21	92	7	13	5	687
Feb	367	78	88	20	89	7	13	4	666
Mar	356	72	78	19	80	8	12	4	629

-
- (a) This table shows prisoners by the state or territory in which they were sentenced, not where they were held in custody.
 - (b) Figures for the quarter and year for the first day of the month counts are calculated as a simple average – see Explanatory Notes, paragraph 5.

PERSONS IN COMMUNITY-BASED CORRECTIONS, By sex(a)

<i>Period</i>	<i>NSW</i>	<i>Vic.</i>	<i>Qld</i>	<i>SA</i>	<i>WA</i>	<i>Tas.</i>	<i>NT</i>	<i>ACT</i>	<i>Aust.</i>
MALES (NUMBER ON FIRST DAY OF MONTH)									
2002 (b)	14 656	5 430	11 061	5 403	4 177	726	818	1 036	43 306
2003 (b)	14 436	6 100	9 239	5 016	3 936	762	859	989	41 337
2004 (b)	14 413	6 452	9 128	4 758	4 132	816	913	937	41 549
2004									
Mar Qtr(b)	14 099	6 268	9 012	4 793	3 955	802	903	963	40 795
Jun Qtr(b)	14 355	6 211	9 139	4 757	4 065	804	909	964	41 205
Sep Qtr(b)	14 495	6 594	9 189	4 757	4 217	813	915	892	41 872
Dec Qtr(b)	14 702	6 735	9 172	4 725	4 290	844	924	931	42 324
2005									
Mar Qtr(b)	15 147	6 700	9 103	4 762	4 274	823	945	960	42 714
Jan	14 934	6 840	9 033	4 725	4 250	797	945	943	42 467
Feb	15 151	6 697	9 092	4 781	4 241	836	953	962	42 713
Mar	15 355	6 563	9 184	4 780	4 331	837	937	974	42 961
FEMALES (NUMBER ON FIRST DAY OF MONTH)									
2002 (b)	2 590	1 205	2 908	1 311	1 164	171	90	194	9 632
2003 (b)	2 533	1 325	2 431	1 158	1 181	176	108	167	9 080
2004 (b)	2 522	1 386	2 449	1 082	1 198	188	129	164	9 118
2004									
Mar Qtr(b)	2 440	1 376	2 432	1 068	1 159	170	125	163	8 934
Jun Qtr(b)	2 503	1 324	2 432	1 069	1 187	182	121	166	8 983
Sep Qtr(b)	2 564	1 426	2 465	1 092	1 214	193	131	163	9 247
Dec Qtr(b)	2 582	1 417	2 466	1 099	1 232	208	140	165	9 308
2005									
Mar Qtr(b)	2 654	1 474	2 458	1 062	1 246	208	140	175	9 417
Jan	2 590	1 503	2 411	1 068	1 239	209	146	162	9 328
Feb	2 668	1 479	2 448	1 066	1 251	205	138	175	9 430
Mar	2 703	1 441	2 515	1 051	1 248	211	137	188	9 494
PERSONS (NUMBER ON FIRST DAY OF MONTH) (c)									
2002 (b)	17 340	6 755	13 969	6 764	5 341	896	908	1 230	53 203
2003 (b)	17 104	7 619	11 670	6 215	5 117	939	967	1 156	50 787
2004 (b)	17 005	8 119	11 577	5 870	5 330	1 004	1 042	1 102	51 049
2004									
Mar Qtr(b)	16 621	7 972	11 444	5 894	5 115	973	1 028	1 126	50 172
Jun Qtr(b)	16 933	7 844	11 570	5 860	5 252	986	1 030	1 130	50 606
Sep Qtr(b)	17 124	8 301	11 654	5 878	5 432	1 006	1 046	1 054	51 495
Dec Qtr(b)	17 342	8 359	11 638	5 848	5 522	1 052	1 065	1 095	51 922
2005									
Mar Qtr(b)	17 865	8 187	11 561	5 841	5 520	1 032	1 086	1 135	52 227
Jan	17 585	8 358	11 444	5 809	5 489	1 006	1 092	1 105	51 888
Feb	17 885	8 189	11 540	5 864	5 492	1 041	1 092	1 137	52 240
Mar	18 126	8 013	11 699	5 851	5 579	1 048	1 075	1 162	52 553

- (a) With the exception of Vic. and Tas., the number of persons in community-based corrections includes those persons with breached or suspended orders.
- (b) Figures for the quarter and year for first day of the month counts are calculated as a simple average—see Explanatory Notes, paragraph 5.
- (c) Includes persons whose sex is unknown.

COMMUNITY-BASED CORRECTIONS RATES, By sex(a)

	NSW	Vic.	Qld	SA	WA	Tas.	NT	ACT	Aust.
MALES (RATE PER 100,000 ADULT POPULATION)									
2002 (b)	594.5	295.5	802.8	949.1	584.7	422.3	1 116.4	875.1	591.0
2003 (b)	579.5	327.7	653.4	872.2	543.3	439.3	1 180.9	826.9	556.2
2004 (b)	572.6	342.4	625.9	820.1	559.6	462.2	1 234.0	776.8	550.4
2004									
Mar Qtr(b)	562.8	334.5	624.6	829.0	539.9	457.4	1 226.1	801.1	543.8
Jun Qtr(b)	571.1	330.4	628.9	820.8	551.8	456.6	1 232.5	801.4	547.0
Sep Qtr(b)	574.7	349.0	627.3	818.9	569.4	459.0	1 235.3	737.1	553.1
Dec Qtr(b)	581.8	355.5	622.9	811.8	577.0	475.6	1 241.8	767.9	557.4
2005									
Mar Qtr(b)	597.8	352.2	614.9	816.2	572.1	462.7	1 265.2	790.3	560.5
Jan	589.4	359.6	610.1	809.8	568.9	447.9	1 265.2	776.6	557.2
Feb	598.0	352.1	614.1	819.4	567.6	469.8	1 275.9	792.2	560.5
Mar	606.1	345.0	620.3	819.3	579.7	470.3	1 254.5	802.1	563.7
FEMALES (RATE PER 100,000 ADULT POPULATION)									
2002 (b)	101.5	62.3	204.9	220.4	161.0	93.9	136.4	156.7	126.8
2003 (b)	98.2	67.7	166.8	192.9	160.5	96.1	165.0	133.6	117.9
2004 (b)	97.0	70.0	164.3	179.1	160.1	101.2	196.6	130.7	116.9
2004									
Mar Qtr(b)	94.2	69.9	164.7	177.3	156.0	92.1	191.0	130.4	115.2
Jun Qtr(b)	96.4	67.0	163.5	177.0	158.7	97.7	183.7	132.6	115.3
Sep Qtr(b)	98.5	72.0	164.9	180.6	161.9	103.5	199.1	129.1	118.4
Dec Qtr(b)	99.0	71.3	164.1	181.6	163.6	111.3	212.3	130.6	118.8
2005									
Mar Qtr(b)	101.5	73.9	162.8	175.1	164.7	111.2	211.3	138.7	119.8
Jan	99.1	75.4	159.6	176.1	163.8	111.5	219.8	128.4	118.7
Feb	102.1	74.2	162.1	175.8	165.4	109.4	207.8	138.7	120.0
Mar	103.4	72.3	166.5	173.3	165.0	112.6	206.3	149.0	120.8
PERSONS (RATE PER 100,000 ADULT POPULATION) (c)									
2002 (b)	345.6	179.1	499.4	581.1	371.7	253.4	651.9	508.2	356.5
2003 (b)	337.4	199.5	406.4	528.8	350.5	262.9	699.8	472.2	335.6
2004 (b)	332.4	210.2	392.6	495.7	358.5	276.9	745.7	447.1	332.6
2004									
Mar Qtr(b)	326.2	207.4	392.0	499.3	346.6	269.8	738.4	458.8	328.8
Jun Qtr(b)	331.3	203.4	393.5	495.2	353.8	272.3	738.6	460.0	330.2
Sep Qtr(b)	334.1	214.4	393.7	495.8	364.4	276.6	748.0	426.9	334.8
Dec Qtr(b)	337.8	215.4	391.1	492.5	369.0	288.7	757.5	442.9	336.6
2005									
Mar Qtr(b)	347.1	210.1	386.6	490.9	367.1	282.4	769.9	458.3	337.3
Jan	341.6	214.5	382.6	488.2	365.1	275.4	773.9	446.3	335.2
Feb	347.5	210.2	385.9	492.8	365.3	284.9	773.9	459.3	337.4
Mar	352.1	205.7	391.2	491.7	371.1	286.9	761.8	469.4	339.5

- (a) With the exception of Vic. and Tas., the number of persons in community-based corrections includes those persons with breached or suspended orders.
- (b) Figures for the quarter and year for the first day of the month are calculated as a simple average—see Explanatory Notes, paragraph 5.
- (c) Includes persons whose sex is unknown.

PERSONS IN COMMUNITY-BASED CORRECTIONS, By type of order(a)(b)

	NSW(c)	Vic.	Qld	SA	WA(d)	Tas.	NT	ACT	Aust.(c)(d)
.....									
RESTRICTED MOVEMENT (NUMBER ON FIRST DAY OF MONTH)									
2002(e)	199	..	81	211	84	..	np	np	613
2003(e)	218	..	65	245	71	..	np	np	658
2004(e)	185	10	70	331	40	..	56	5	697
2004									
Mar Qtr(e)	202	—	66	334	58	..	63	4	728
Jun Qtr(e)	192	7	75	324	77	..	52	3	730
Sep Qtr(e)	171	18	62	326	11	..	51	5	645
Dec Qtr(e)	176	16	76	340	13	..	58	7	686
2005									
Mar Qtr(e)	192	20	69	336	20	..	60	4	701
Jan	185	18	73	331	20	..	57	4	688
Feb	187	22	66	341	21	..	60	3	700
Mar	204	21	68	335	18	..	64	4	714
.....									
REPARATION—FINE OPTION (NUMBER ON FIRST DAY OF MONTH)									
2002(e)	56	1 107	2 632	1 891	398	95	25	..	6 203
2003(e)	7	1 590	1 940	1 301	388	85	3	..	5 314
2004(e)	91	1 585	1 633	943	322	np	np	..	4 677
2004									
Mar Qtr(e)	17	1 643	1 729	986	272	78	3	..	4 728
Jun Qtr(e)	74	1 399	1 705	957	355	94	3	..	4 587
Sep Qtr(e)	117	1 591	1 629	939	317	np	np	..	4 706
Dec Qtr(e)	156	1 707	1 470	889	345	np	np	..	4 687
2005									
Mar Qtr(e)	159	1 610	1 391	827	311	np	np	..	4 413
Jan	161	1 723	1 347	825	300	np	np	..	4 467
Feb	164	1 621	1 409	833	306	np	np	..	4 445
Mar	152	1 486	1 418	822	327	np	np	..	4 327
.....									
REPARATION—COMMUNITY SERVICE (NUMBER ON FIRST DAY OF MONTH)									
2002(e)	4 447	915	2 116	1 534	2 329	379	242	159	12 120
2003(e)	4 411	945	1 883	1 566	2 148	380	256	140	11 730
2004(e)	4 430	1 088	1 896	1 447	2 179	421	254	116	11 830
2004									
Mar Qtr(e)	4 347	1 016	1 834	1 421	2 142	407	256	123	11 547
Jun Qtr(e)	4 399	1 123	1 891	1 440	2 145	425	256	121	11 799
Sep Qtr(e)	4 438	1 148	1 940	1 458	2 193	415	259	113	11 963
Dec Qtr(e)	4 537	1 063	1 919	1 470	2 236	438	243	105	12 011
2005									
Mar Qtr(e)	4 704	1 000	1 867	1 380	2 208	450	244	96	11 950
Jan	4 614	1 027	1 864	1 404	2 188	429	250	94	11 870
Feb	4 709	1 008	1 867	1 384	2 178	457	249	97	11 949
Mar	4 790	964	1 871	1 353	2 257	465	234	96	12 030
.....									
..	not applicable				(c) Bail figures in NSW prior to September quarter 2003 are under enumerated – see Explanatory Notes, paragraph 14.				
—	nil or rounded to zero (including null cells)				(d) Bail figures for WA became available from December quarter 2003 – see Explanatory Notes, paragraph 33.				
np	not available for publication but included in totals where applicable, unless otherwise indicated				Prior to the September quarter 2004, counts of restricted movement included conditional bail orders. These are now included in bail orders.				
(a)	If a person has more than one type of order, they are counted against each order in this table. If a person has more than one order of the same order type, they are counted once in the order type.				(e) Figures for the quarter and year for first day of the month counts are calculated as a simple average – see Explanatory Notes, paragraph 5.				
(b)	With the exception of Vic. and Tas., the number of persons in community-based corrections includes those persons with breached or suspended orders.								

	NSW(c)	Vic.	Qld	SA	WA(d)	Tas.	NT	ACT	Aust.(c)(d)
.....									
SUPERVISION (COMPLIANCE)–PAROLE (NUMBER ON FIRST DAY OF MONTH)									
2002(e)	3 425	1 198	1 252	904	1 303	88	163	133	8 465
2003(e)	3 573	1 335	1 045	931	1 264	92	150	111	8 502
2004(e)	3 756	1 465	932	949	1 255	95	153	113	8 719
2004									
Mar Qtr(e)	3 631	1 452	952	910	1 250	98	150	119	8 563
Jun Qtr(e)	3 683	1 467	921	941	1 222	102	155	121	8 612
Sep Qtr(e)	3 803	1 459	928	982	1 261	93	155	107	8 788
Dec Qtr(e)	3 909	1 482	928	961	1 287	87	153	105	8 912
2005									
Mar Qtr(e)	4 092	1 482	953	946	1 315	90	144	120	9 142
Jan	4 052	1 501	943	942	1 315	91	144	108	9 096
Feb	4 099	1 484	955	950	1 302	91	144	117	9 142
Mar	4 126	1 461	961	946	1 329	88	144	134	9 189
.....									
SUPERVISION (COMPLIANCE)–BAIL (NUMBER ON FIRST DAY OF MONTH)									
2002(e)	172	300	3	197	671
2003(e)	288	439	7	..	3	185	922
2004(e)	275	571	154	..	5	179	1 184
2004									
Mar Qtr(e)	299	535	67	..	7	181	1 088
Jun Qtr(e)	284	542	89	..	4	180	1 099
Sep Qtr(e)	276	565	228	..	4	161	1 234
Dec Qtr(e)	242	642	233	..	6	195	1 317
2005									
Mar Qtr(e)	240	733	229	..	4	210	1 417
Jan	251	698	237	..	4	199	1 389
Feb	242	740	229	..	4	209	1 424
Mar	228	762	222	..	4	221	1 437
.....									
SUPERVISION (COMPLIANCE)–SENTENCED PROBATION (NUMBER ON FIRST DAY OF MONTH)									
2002(e)	11 109	3 725	7 888	2 641	3 342	438	465	812	30 419
2003(e)	10 618	3 940	7 607	2 642	3 212	500	528	842	29 888
2004(e)	10 285	4 233	7 553	2 491	3 396	516	608	815	29 897
2004									
Mar Qtr(e)	10 107	4 083	7 415	2 453	3 280	509	583	833	29 262
Jun Qtr(e)	10 306	4 107	7 529	2 437	3 343	494	595	812	29 623
Sep Qtr(e)	10 342	4 375	7 580	2 526	3 472	515	612	797	30 219
Dec Qtr(e)	10 387	4 366	7 690	2 547	3 490	544	641	819	30 484
2005									
Mar Qtr(e)	10 586	4 302	7 631	2 591	3 523	517	668	827	30 645
Jan	10 429	4 332	7 584	2 574	3 500	510	672	814	30 415
Feb	10 567	4 284	7 592	2 591	3 522	522	670	836	30 584
Mar	10 761	4 290	7 717	2 609	3 546	519	663	830	30 935

.. not applicable

- (a) If a person has more than one type of order, they are counted against each order in this table. If a person has more than one order of the same order type, they are counted once in the order type.
- (b) With the exception of Vic. and Tas., the number of persons in community-based corrections includes those persons with breached or suspended orders.
- (c) Bail figures in NSW prior to September quarter 2003 are under enumerated – see Explanatory Notes, paragraph 14.

- (d) Bail figures for WA became available from December quarter 2003 – see Explanatory Notes, paragraph 33. Prior to the September quarter 2004, counts of restricted movement included conditional bail orders. These are now included in bail orders.
- (e) Figures for the quarter and year for first day of the month counts are calculated as a simple average – see Explanatory Notes, paragraph 5.

EXPLANATORY NOTES

INTRODUCTION

1 This publication presents statistical series on persons held in either adult corrective services custody or who are serving adult community-based orders in Australia. It contains data on the number of persons by their sex, Indigenous status, type of custody, legal status and sentence type; the number of sentenced persons received into corrective services custody each month; and the number of federal prisoners.

2 Statistics presented in this publication are compiled in three ways:

- Average daily prisoner population: Counts taken on each day of the month are summed and divided by the number of days in that month to determine the average daily prisoner population for that month. The average daily periodic detainee population is a count of persons on periodic detention on each day a centre is open, divided by the number of days a centre is open.
- Sentenced prisoner reception figures: Counts are provided each month on the number of receptions where a prisoner is received as a sentenced prisoner. This includes prisoners with a change of legal status from unsentenced to sentenced.
- First day of the month prisoner population: Counts of prisoner populations, taken on or near the first day of the month (see Explanatory Notes, paragraphs 4 and 5), and counts of persons serving community-based corrections orders.

3 Although national standards and classifications are used in the compilation of these statistics, some discrepancies remain between the states and territories. These are due to legislative and procedural differences between jurisdictions and the way that these differences are reflected in agencies' administrative data systems. As part of its quality assurance strategy, the ABS is working with corrective services agencies to minimise the effect of these differences.

REFERENCE PERIOD/DATE

4 The reference period for average daily prisoner population statistics and sentenced reception counts is the complete reference month. Prior to the December quarter 2004, average daily statistics for Australian Capital Territory prisoners held in New South Wales could not be supplied, and a single count taken on a specific day of the month was used instead. The reference date for all other figures is the first day of the reference month. However, not all states and territories report strictly according to this 'first day of the month' rule:

- The Western Australian and Victorian prison population and Australian Capital Territory prisoners in New South Wales prisons are counted as at midnight on the last day of the month. In these cases the figures provided are taken to represent the prison population at the beginning of the following month to align with practices in other states and territories.
- Prior to the September quarter 2004, the New South Wales prison population was counted on the last Sunday of the month. The New South Wales community-based corrections population is counted on the first day of the month.

5 Calculation of figures for the entire quarter and entire year varies depending on the counting unit and method of counting prisoners. These figures may be subject to rounding:

- Average daily figures: Figures are calculated by weighting the average according to the number of days in each month or year.
- First day of the month: Figures are simple averages. For quarterly figures, the sum of the monthly data is divided by three; for yearly figures, the figures for each month are added and the total divided by twelve.
- Sentenced receptions: Figures are totals of each month.

SCOPE

6 The scope of the statistics in this publication includes all persons remanded or sentenced to adult custodial corrective services agencies (including Work Outreach Camps and Community Custody Centres in Queensland), or who are serving adult community-based orders in each state and territory in Australia.

EXPLANATORY NOTES *continued*

SCOPE *continued*

7 Counts of prisoners in the following custodial facilities are included in the collection:

- gazetted prisons in all jurisdictions
- periodic detention centres in New South Wales and the Australian Capital Territory
- Community Custody Centres and Work Outreach Camps in Queensland
- cells in court complexes administered by corrective services in New South Wales
- transitional centres in New South Wales
- lock-ups in Western Australia operated by the police but designated as a prison by the Chief Executive Officer of Corrective Services.

8 The prisons and community corrections collection excludes the following custodial facilities:

- police lockups, police prisons and cells in court complexes not administered and controlled by corrective services
- gazetted police prisons in the Northern Territory
- juvenile detention centres
- immigration detention centres
- military prisons.

9 This collection includes counts of persons remanded or sentenced to adult custody facilities, or directed to serve community based orders administered by adult corrective service agencies. In all states and territories except Victoria and Queensland, persons are considered adults if aged 18 years and over. In Victoria and Queensland persons are considered adults if aged 17 years and over. The vast majority of persons counted in the collection are adults. However, juveniles may be included in exceptional circumstances.

10 Federal prisoners include those persons charged and sentenced under a Commonwealth statute, and those persons who are charged and sentenced under the laws of another country, but transferred to an Australian prison to serve their sentence under the *International Transfer of Prisoners Act 1997* (Cwlth). To give practical effect to this legislation in Australia, the framework was introduced in January 2003. For the purposes of this publication, federal sentenced prisoners are those persons who are recognised by the Criminal Law Division of the Australian Government Attorney-General's Department as having been charged and sentenced under a Commonwealth statute, or transferred from another country to serve their sentence in Australia.

11 Community-based corrections includes those persons with breached or suspended orders, with the exception of Victoria and Tasmania.

DATA SOURCE

12 Statistics in this publication are derived from information provided to the ABS from administrative records held by corrective services agencies within each state and territory. Statistics on federal prisoners are derived from records kept by the Criminal Law Division of the Australian Government Attorney-General's Department.

13 Tasmanian first day of month data for reference periods prior to the September quarter 2003 are under enumerated. Data are currently being investigated and may be revised. Prior to January 2004, sentenced reception figures for Tasmania do not include all prisoners changing from unsentenced custody to sentenced custody.

14 New South Wales community-based corrections data are subject to ongoing quality assurance processes undertaken in this state. Prior to the September quarter 2003, pre-sentence reports were omitted from reported bail figures. Bail figures relating to earlier reference periods are under enumerated.

COUNTING RULES

15 Statistics for persons held in custody are presented by the state or territory in which they are held, which may not be the sentencing jurisdiction. The only exception to this are data for federal sentenced prisoners. These are presented by the state or territory in which they were sentenced, not where they were held in custody.

EXPLANATORY NOTES *continued*

COUNTING RULES *continued*

16 Sentenced prisoners who have other offences which are unsentenced are counted as sentenced. Prisoners may be unsentenced because they are awaiting the outcome of their trial, convicted but awaiting sentence, or awaiting deportation.

17 If an offender has two or more different types of community-based orders operating simultaneously, then each order will be counted. If two or more community-based orders are of the same type, these orders together will only be counted as one order.

INDIGENOUS IDENTIFICATION

18 In all states and territories persons are asked during entry into custody whether they are of Aboriginal or Torres Strait Islander origin. It is uncommon for corrective services agencies to collect Indigenous status information from sources other than the person's own identification.

19 Some persons in custody are recorded as of unknown Indigenous status on the information systems of corrective services agencies, but unknown Indigenous status data have not been provided for this collection. Such persons are designated as non-Indigenous. It is intended that unknown Indigenous status will be collected from these systems in future.

AUSTRALIAN CAPITAL TERRITORY PRISONERS

20 The Australian Capital Territory has two remand centres for unsentenced prisoners and a periodic detention centre. In January 1999, the Australian Capital Territory corrections commenced sending some unsentenced prisoners to New South Wales prisons. With the exception of some sentenced fine default only prisoners, persons sentenced to full-time custody by Australian Capital Territory criminal courts are held in New South Wales prisons. During 2000 the Australian Capital Territory commenced detaining prisoners sentenced for fine default only at their centre for unsentenced persons.

21 To provide greater understanding of the number of prisoners attributed to the Australian Capital Territory, while presenting an accurate picture of the New South Wales prisoner population, statistics relating to Australian Capital Territory prisoners in New South Wales prisons are presented as a subset of the New South Wales figures.

22 Imprisonment rate data for the Australian Capital Territory are included in the publication and are calculated on the basis of the total number of Australian Capital Territory prisoners (i.e. Australian Capital Territory prisoners held in New South Wales prisons, and Australian Capital Territory prisoners held in the Australian Capital Territory) divided by the estimated resident Australian Capital Territory adult population and multiplied by 100,000. For New South Wales, the imprisonment rate is based on the count of New South Wales prisoners, excluding Australian Capital Territory prisoners held in New South Wales prisons, divided by the estimated resident New South Wales adult population and multiplied by 100,000. Time series data have also been derived on this basis.

RATES

23 Imprisonment and community-based corrections rates enable comparisons of prisoner numbers to be made across states and territories. Prisoner and community-based corrections rates are expressed per 100,000 adult population.

24 In this publication the population figures used in the calculation of rates are for persons aged 18 years and over for all states and territories except Victoria and Queensland where the population used is of persons aged 17 years and over (see Explanatory Notes, paragraph 9).

25 Rates for the total adult prisoner population and persons in community-based corrections are calculated using the estimated resident population (ERP) for each of the states and territories (refer *Australian Demographic Statistics* (cat. no. 3101.0)). All estimates for the Australian Capital Territory exclude Jervis Bay Territory. All estimates for Australia exclude the external territories of Christmas Island and the Cocos (Keeling)

EXPLANATORY NOTES *continued*

RATES *continued*

Island. As the population changes over time the denominator used for the calculation of rates varies, depending on the reference period. The most current ERP data available at the time of publication are used to calculate rates:

- For the March quarter, ERP is from the previous September quarter;
- For the June quarter, ERP is from the previous December quarter;
- For the September quarter, ERP is from the previous March quarter;
- For the December quarter, ERP is from the previous June quarter; and
- Annual rates are an average of the rates of the contributing quarters.

Indigenous imprisonment rates

26 Rates for the Indigenous adult population in this publication are based on the low series projections for 30 June of the current calendar year (refer to *Experimental Estimates and Projections, Aboriginal and Torres Strait Islander Australians, 30 June 1991 to 30 June 2009* (cat. no. 3238.0)). These projections are based on the 2001 Census of Population and Housing.

27 The low series are one of two series of these projections that have been published for the years 2002 to 2009.

- The low series assumes no 'unexplained growth' – that is, the Indigenous population recorded in the 2001 Census of Population and Housing is projected to change only as a result of births and deaths (natural increase) and, for the states and territories, as a result of interstate migration.
- The high series assumes that there will be 'unexplained growth' in the Indigenous population – that is, the Indigenous population is projected to change as a result of an unexplained component in addition to the effects of natural increase and interstate migration. The size of the unexplained component is based on the 'unexplained growth' observed between the 1996 and 2001 censuses.

28 The decision to use the low series as the denominator in the calculation of Indigenous imprisonment rates from 2002, followed consultation with the National Corrective Services Statistics Unit Advisory Group and other stakeholders.

Revisions to historical Indigenous rates

29 Historical rates for Indigenous prisoners have been revised using Indigenous population projections based on the 2001 Census of Population and Housing (low series) for 2002 to 2004.

SIGNIFICANT EVENTS

30 The Maryborough Correctional Centre, Queensland, was officially opened in April 2003. The Centre has the capacity to hold 500 prisoners.

31 During 2002 the following factors in Western Australia impacted on the prisoner population: an increase in the acquittal and dismissal rates in courts; greater use by the courts of suspended imprisonment and community orders as penalties; and a decrease in the breach rate for early release orders. The impact of these factors has been proportionally greater on the number of Indigenous prisoners who tend to be convicted of offences which attract shorter sentences.

32 During 2003 in Western Australia there was an increase in the number of Indigenous persons sentenced to imprisonment by the courts, mostly in relation to 'Driving/Traffic', 'Against the Person' and 'Justice/Good Order' offences.

33 A range of amendments to Western Australian corrections legislation came into effect in 2003 and 2004. As a result of these, bail figures were included for the first time in Western Australia in the December quarter 2003. Prior to the September quarter 2004, counts of restricted movement orders included conditional bail orders (which may have a restricted movement condition). All conditional bail orders are now counted as bail orders.

EXPLANATORY NOTES *continued*

SIGNIFICANT EVENTS *continued*

34 During the March and June quarters of 2002, Tasmania recorded a large increase in the number of unsentenced prisoners. This overall increase was due to an increase in lodgments in the Supreme Court coupled with the move by police to more actively oppose bail. The variation over the period is explained primarily by the availability of judicial resources. A Supreme Court judge was allocated to a long running trial in the March and June quarters of 2002 – this represented 25% of the judicial resources allocated to crime by the court. There was also a reduction in the number of magistrates available in the Court of Petty Sessions due to a number of long running coronial inquests.

35 In the Northern Territory, over the 12 months to 30 June 2003, there was an increase in the number of Indigenous persons sentenced to imprisonment for a range of assault and driving offences.

RELATED PUBLICATIONS

ABS Publications

36 Other ABS publications which may be of interest include:

Australian Demographic Statistics (cat. no. 3101.0) – issued quarterly

Australian Social Trends (cat. no. 4102.0) – issued annually

Australian Standard Offence Classification (cat. no. 1234.0) – irregular

Crime and Safety, Australia (cat. no. 4509.0) – irregular

Criminal Courts, Australia (cat. no. 4513.0) – issued annually

Experimental Estimates and Projections, Aboriginal and Torres Strait Islander

Australians, 30 June 1991 to 30 June 2009 (cat. no. 3280.0)

General Social Survey: Summary Results, Australia (cat. no. 4159.0) – irregular

Information Paper: Measuring Crime Victimisation, Australia: The Impact of

Different Collection Methodologies (cat. no. 4522.0.55.001) – single issue

Information paper: National Information Development Plan for Crime and Justice

Statistics 2005 (cat. no. 4520.0) – single issue

Measures of Australia's Progress (cat. no. 1370.0) – issued annually

Prisoners in Australia (cat. no. 4517.0) – issued annually

Recorded Crime – Victims, Australia (cat. no. 4510.0) – issued annually

Sexual Assault in Australia: A Statistical Overview (cat. no. 4523.0) – single issue

Year Book Australia (cat. no. 1301.0) – issued annually

37 Current publications and other products released by the ABS are listed in the *Catalogue of Publications and Products* (cat. no. 1101.0). The Catalogue is available from the ABS web site <<http://www.abs.gov.au>>. The ABS also issues a daily Release Advice on the web site which details products to be released in the week ahead. The National Centre for Crime and Justice Statistics releases a biannual newsletter that is published on the ABS web site. The Centre can be contacted by email through <crime.justice@abs.gov.au>.

EXPLANATORY NOTES *continued*

Non-ABS Publications

- 38** Non-ABS sources which may be of interest include:
- Australian Institute of Criminology, *List of Publications* – irregular
<<http://www.aic.gov.au>>
- Crime Research Centre, University of Western Australia, *Crime and Justice Statistics for Western Australia* – issued bi-annually
<<http://www.crc.law.uwa.edu.au>>
- Department of Corrective Services, New South Wales,
NSW Inmate Census – irregular
<<http://www.dcs.nsw.gov.au>>
- Department of Justice, Northern Territory, *Northern Territory Quarterly Crime and Justice Statistics* – issued quarterly
<<http://www.nt.gov.au/justice/>>
- Department of Justice, Victoria, *Statistical Profile of the Victorian Prison System* – issued annually
<<http://www.justice.vic.gov.au>>
- NSW Bureau of Crime Statistics and Research, *New South Wales Criminal Courts Statistics* – issued annually
<<http://www.lawlink.nsw.gov.au>>
- Office of Crime Statistics and Research, South Australia, *Crime and Justice in South Australia* – issued annually
<<http://www.ocsar.sa.gov.au>>
- Steering Committee for the Review of Commonwealth/State Service Provision,
Report on Government Services – issued annually
<<http://www.pc.gov.au/publications/index.html>>

ABBREVIATIONS

ABS	Australian Bureau of Statistics
ACT	Australian Capital Territory
Aust.	Australia
ERP	estimated resident population
NCCJS	National Centre for Crime and Justice Statistics
NSW	New South Wales
NT	Northern Territory
Qld	Queensland
SA	South Australia
Tas.	Tasmania
Vic.	Victoria
WA	Western Australia

GLOSSARY

Bail	This is generally a pre-sentence option where a person is released into the community for a period before they appear in court for trial or final sentencing. Bail orders can require a financial surety to be lodged with the court, and a number of conditions including supervision and residential requirements designed to ensure the re-appearance of the person at court. Bail counts are available only in states and territories where bail orders are supervised by corrective services. Bail is a sub-category of Supervision where the person is under the supervision of corrective services (<i>see</i> Supervision).
Community-based corrections	This refers to the community-based management of court-ordered sanctions, post-prison administrative arrangements and fine conversions, which principally involve the provision of one or more of the following activities: supervision, programs or community work.
Community service	This category of community-based correction orders includes sentencing options requiring offenders to undertake a specified number of hours of unpaid, supervised work to benefit the community on an approved project. Community service is a sub-category of Reparation (<i>see</i> Reparation).
Corrective services custody	Confinement in a place intended primarily for the purpose of confining prisoners, such as a prison, prison farm, Periodic Detention Centre or Community Custody Centre.
Federal sentenced prisoner	Persons charged and sentenced under a Commonwealth statute or transferred from another country to serve their sentence in Australia.
Fine option	A community-based sentence type where the offender is serving a sentence for default of a fine. In most jurisdictions this order type requires an offender to complete community service as a reparatory act. Fine option is a sub-category of Reparation (<i>see</i> Reparation).
Full-time prison custody	A type of custody where a prisoner is required to be held in custody on a full-time basis. This includes prisons, Queensland Community Custody Centres and work outreach camps. Full-time prison custody excludes periodic detention (<i>see</i> Periodic detention).
Home detention	(<i>see</i> Restricted movement)
Indigenous prisoner	A prisoner who identifies as being of Aboriginal or Torres Strait Islander origin, or both.
Legal status	A person may be either sentenced or unsentenced depending on the warrant(s) or court order(s) which provide the legal basis for the administration of the person through the criminal justice system.
Open custody	Refers to prisoners housed in minimum security custodial facilities, that do not require them to be confined by a secure perimeter physical barrier, irrespective of whether a physical barrier exists.
Parole	A parole order is made following a period of imprisonment and requires an offender to be subject to supervision in the community. Additional conditions may also be applied such as programs, counselling or drug testing. Parole is a sub-category of Supervision (<i>see</i> Supervision).
Periodic detention	A type of custody or order where a sentenced prisoner is required to be held in custody on a part-time basis. Currently this consists of two consecutive days in a one-week period, while remaining at liberty during the rest of the week.
Prisoner	A person held in custody. For the purposes of this collection, prisoners are those whose confinement is the responsibility of a corrective services agency.
Reparation	Reparation refers to all offenders with an order that requires them to undertake unpaid, justice agency-approved community service work.
Restricted movement	This refers to persons who are subject to a system of restricted movement, including supervision and/or electronic monitoring. This category includes home detention which may restrict residence to a nominated place. Restricted movement can be either a pre-sentence or post-sentence order.

GLOSSARY *continued*

Secure custody	Refers to prisoners housed in medium or maximum security custodial facilities requiring them to be confined by a secure physical barrier.
Sentenced	A legal status indicating that a person has received a custodial or community-based order from a court in response to a conviction for an offence.
Sentenced prisoner reception	<p>Refers to entry into corrective services custody from the community, having received a sentence of imprisonment as an outcome of a court proceeding. It also includes persons who are sentenced to custody while in custody on remand (i.e. change status from a remand to a sentenced prisoner). Sentenced prisoners in custody who receive a further sentence of imprisonment are not counted as sentenced receptions.</p> <p>Two types of sentenced prisoner reception are distinguished:</p> <ul style="list-style-type: none">■ A <i>fine default only</i> reception is a sentenced reception where a person enters custody as a result of defaulting on the payment of a fine and no other sentence.■ An <i>other sentenced</i> reception is a sentenced reception (including changes of status from unsentenced to sentenced) for anything other than a fine default only reception.
Sentenced probation	A supervision order made following an original sentence handed down in court following conviction. A probation order generally requires 'good behaviour' and compliance with the directions of supervisors. The order may also require compliance with conditions such as program attendance and residential requirements.
Supervision (compliance)	This includes community-based orders other than those categorised as restricted movement or reparation (e.g. parole, bail and sentenced probation).
Unsentenced	A legal status indicating that a person is confined to custody or supervision while awaiting the outcome of their trial.

FOR MORE INFORMATION . . .

- INTERNET* **www.abs.gov.au** the ABS web site is the best place to start for access to summary data from our latest publications, information about the ABS, advice about upcoming releases, our catalogue, and Australia Now—a statistical profile.
- LIBRARY* A range of ABS publications is available from public and tertiary libraries Australia-wide. Contact your nearest library to determine whether it has the ABS statistics you require, or visit our web site for a list of libraries.
- CPI INFOLINE* For current and historical Consumer Price Index data, call 1902 981 074 (call cost 77c per minute).
- DIAL-A-STATISTIC* This service now provides only current Consumer Price Index statistics call 1900 986 400 (call cost 77c per minute).

INFORMATION SERVICE

Data already published that can be provided within five minutes will be free of charge. Our information consultants can also help you to access the full range of ABS information—ABS user pays services can be tailored to your needs, time frame and budget. Publications may be purchased. Specialists are on hand to help you with analytical or methodological advice.

- PHONE* 1300 135 070
- EMAIL* client.services@abs.gov.au
- FAX* 1300 135 211
- POST* Client Services, ABS, GPO Box 796, Sydney NSW 2001

WHY NOT SUBSCRIBE?

ABS subscription services provide regular, convenient and prompt deliveries of selected ABS publications and products as they are released. Email delivery of monthly and quarterly publications is available.

- PHONE* 1300 366 323
- EMAIL* subscriptions@abs.gov.au
- FAX* (03) 9615 7848
- POST* Subscription Services, ABS, GPO Box 2796Y, Melbourne Vic 3001



2451200003052

ISSN 1440 5997

RRP \$24.00